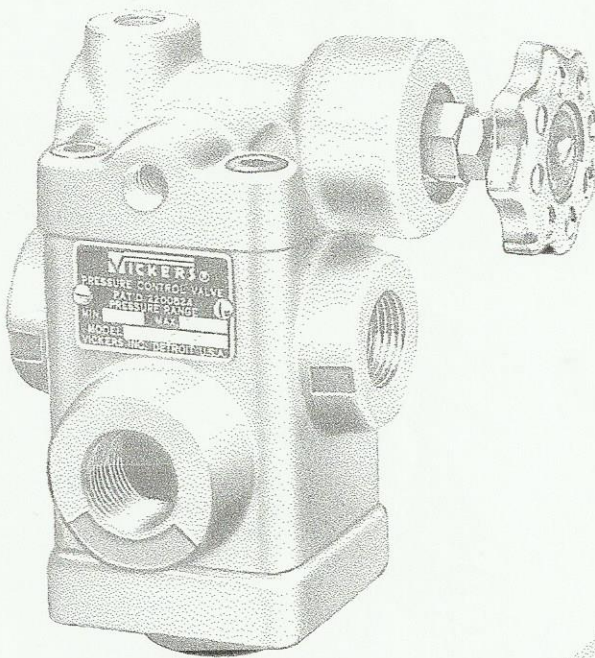


VICKERS

**PRESSURE REDUCING VALVES
HIGH PRESSURE SERIES**



**SERVICE
PARTS
INFORMATION**



**Models: XT/XCT-03-F-10
XT/XCT-06-F-10
XT/XCT-10-F-10
XT/XCT-12-F-10**

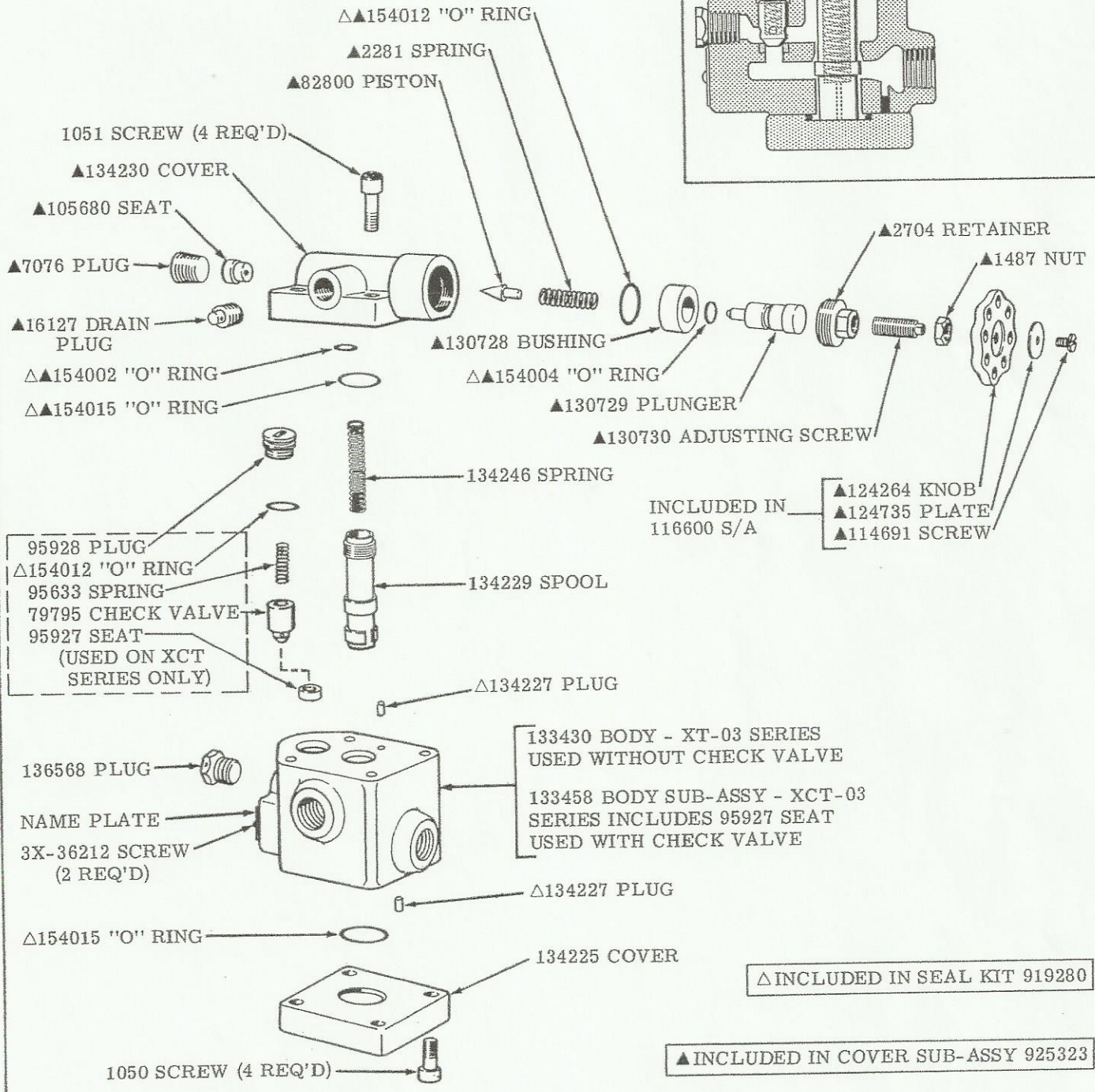
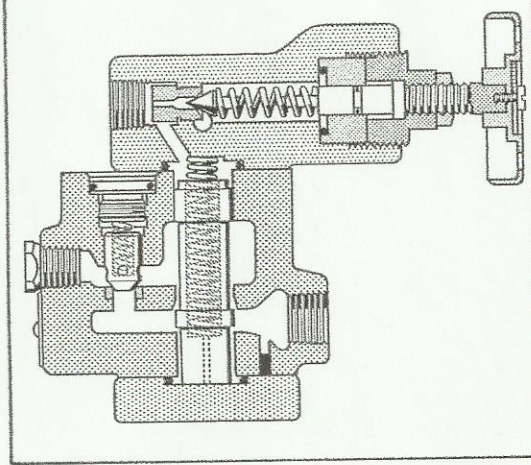
VICKERS INCORPORATED
DIVISION OF SPERRY RAND CORPORATION
Machinery Hydraulics Division
Service Department

P. O. BOX 302 TROY, MICHIGAN 48064
ATLANTA • CHICAGO • DETROIT • EL SEGUNDO • HOUSTON
SEATTLE • SPRINGFIELD, N.J. • TORONTO

Rel. 9-30-64

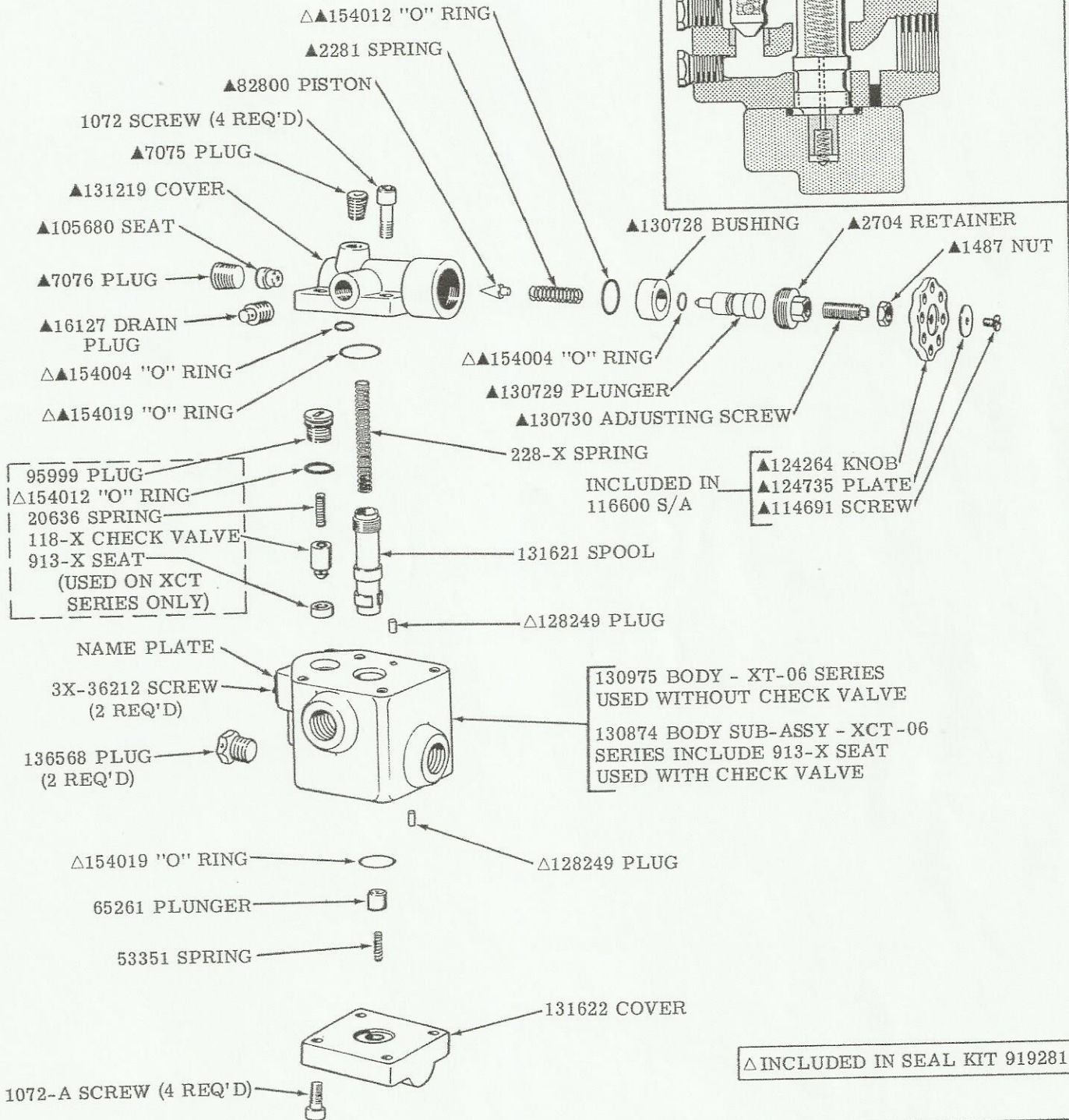
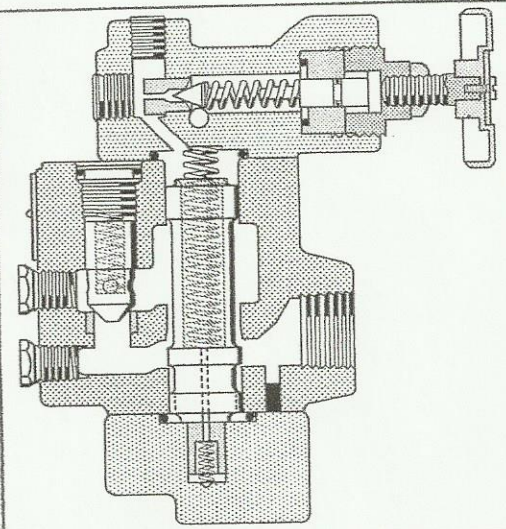
I-3354-S

MODELS: 3/8" NOMINAL PIPE SIZE
 XT-03-F-10 WITHOUT CHECK VALVE
 XCT-03-F-10 WITH CHECK VALVE



To insure sustained efficiency and maximum trouble-free life of this precision equipment, initial and continuous filtration of the fluid medium to 25 microns or less is essential. (For information pertaining to Vickers economical 10 micron filters, see installation drawing I & M 229847.

MODELS: 3/4" NOMINAL PIPE SIZE
 XT-06-F-10 WITHOUT CHECK VALVE
 XCT-06-F-10 WITH CHECK VALVE

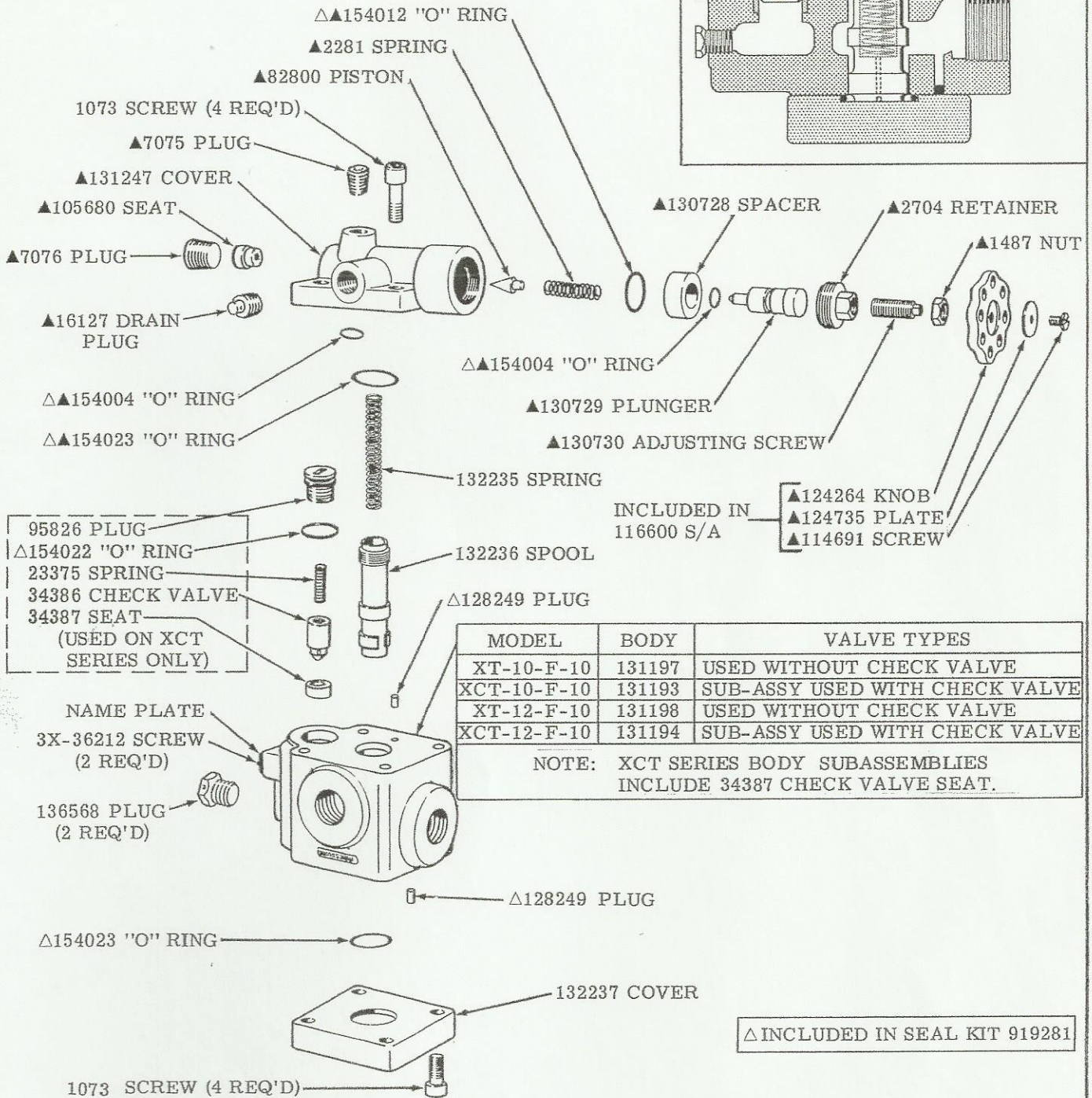
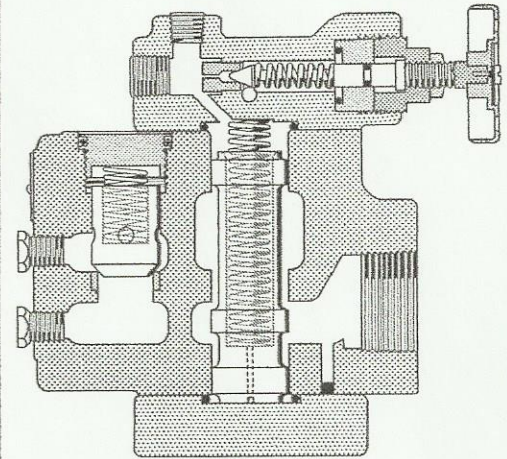


▲ INCLUDED IN SEAL KIT 919281

▲ INCLUDED IN COVER SUB-ASSY 925324

MODELS: NOMINAL PIPE SIZE PORTS

- XT-10-F-10 1-1/4" PORTS WITHOUT CHECK VALVE
- XT-12-F-10 1-1/2" PORTS WITHOUT CHECK VALVE
- XCT-10-F-10 1-1/4" PORTS WITH CHECK VALVE
- XCT-12-F-10 1-1/2" PORTS WITH CHECK VALVE



MODEL	BODY	VALVE TYPES
XT-10-F-10	131197	USED WITHOUT CHECK VALVE
XCT-10-F-10	131193	SUB-ASSY USED WITH CHECK VALVE
XT-12-F-10	131198	USED WITHOUT CHECK VALVE
XCT-12-F-10	131194	SUB-ASSY USED WITH CHECK VALVE

NOTE: XCT SERIES BODY SUBASSEMBLIES INCLUDE 34387 CHECK VALVE SEAT.

▲ INCLUDED IN SEAL KIT 919281

▲ INCLUDED IN COVER SUB-ASSY 925325