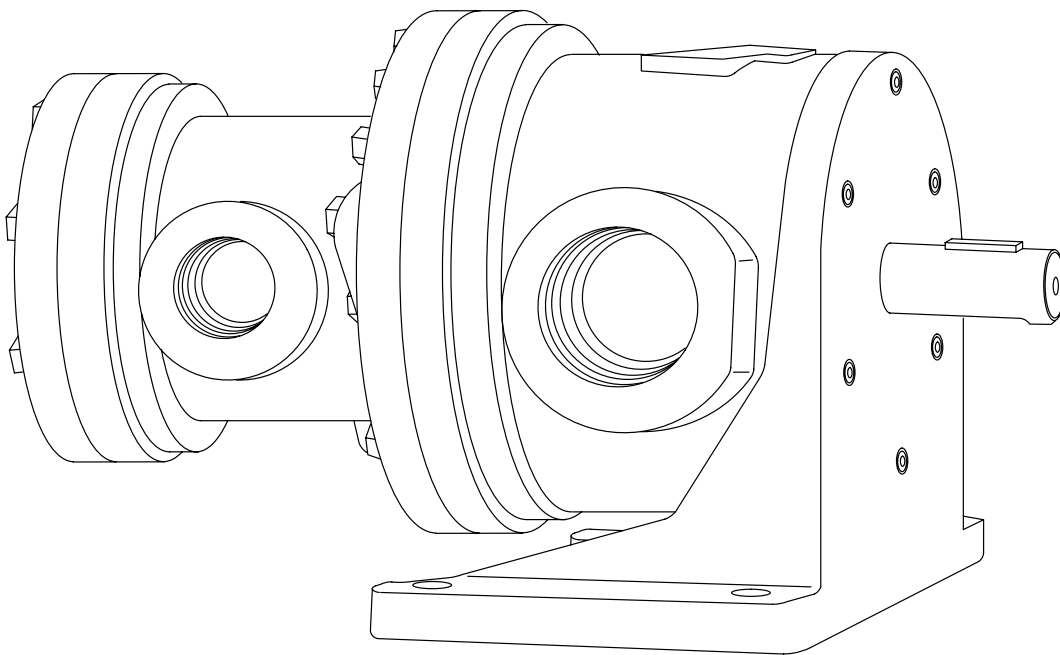


Vane Pumps



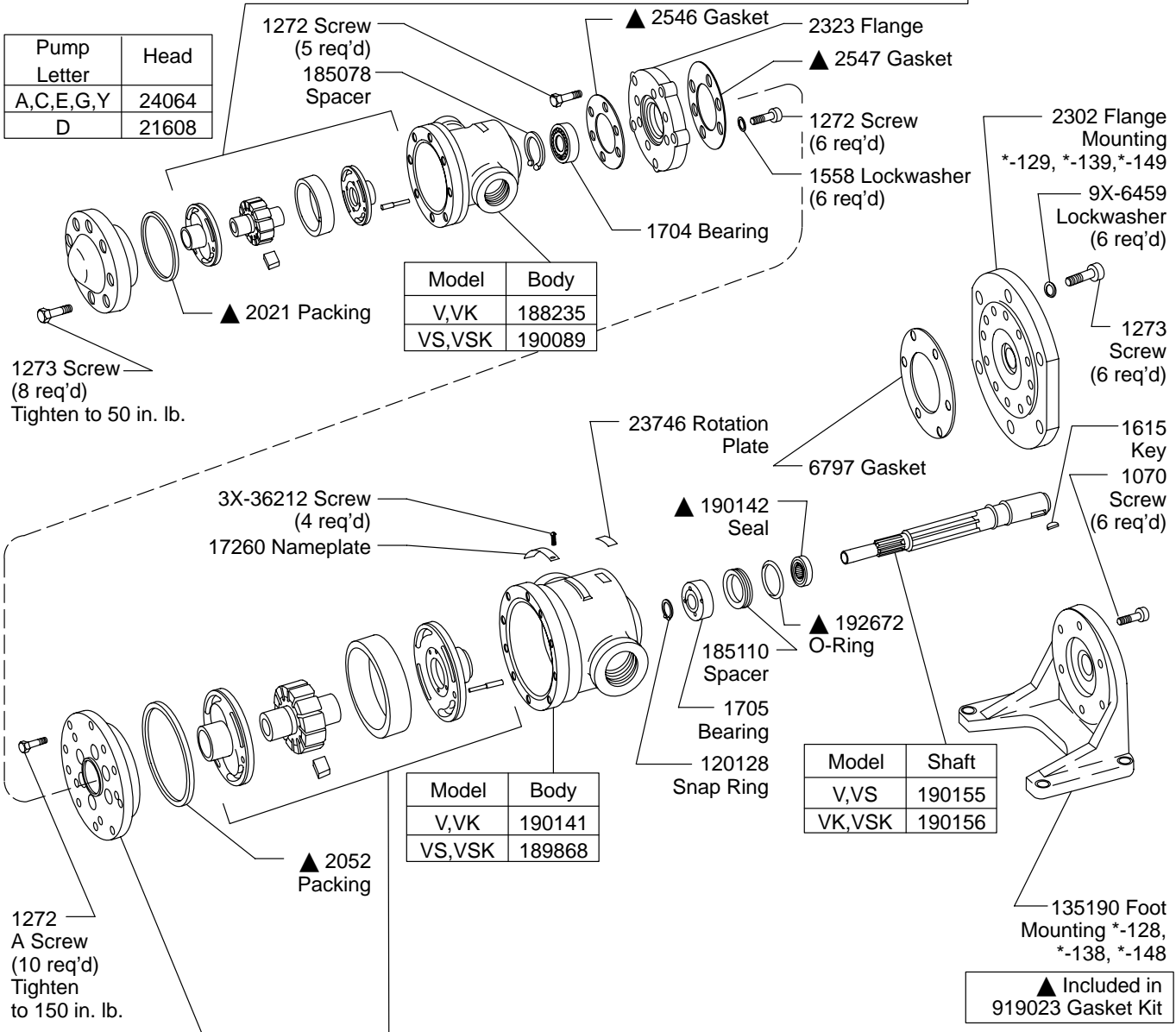
Intermediate Series Vane Type Double Pumps

V/VK/VS/VSK-29,39*,49,128,129,138*,139*,148,149-0/10/12 Designs



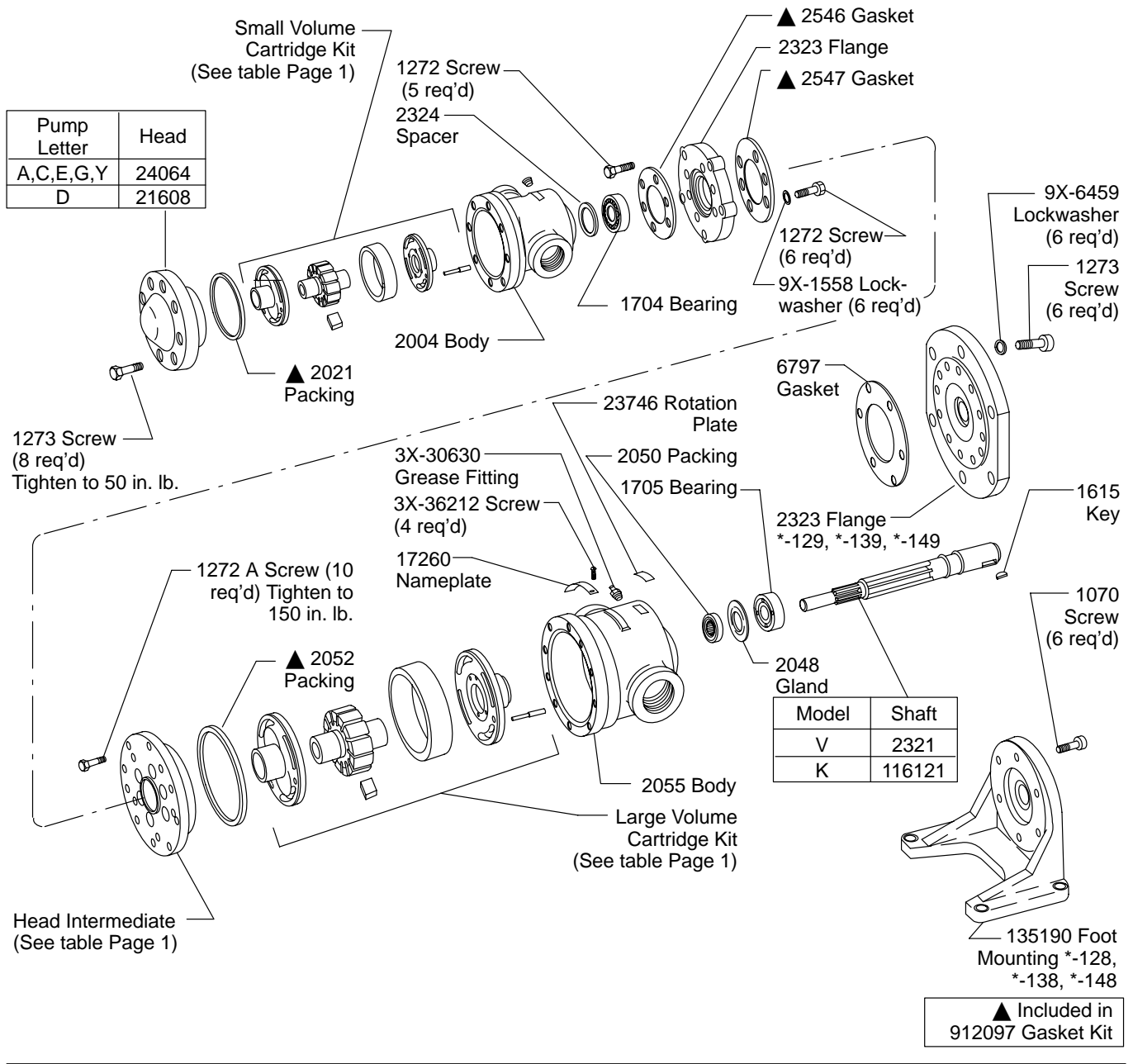
-20 Design

Pump Letter	Cap. GPM@ 0 psi	Bushing R.H. or L.H.		Pin	Rotor	Vane Kit (12 Vanes)	Ring	Bushing R.H. or L.H.		Cartridge Kit	
These Parts are Included in Cartridge Kits											
Y	1.8	2016	2015	2020	2008	912021		2015	2016	12220	912017
E	2.7									2299	912015
G	3.7									40151	912016
A	5.3									2011	912013
C	8.2									2013	912014
D	11.5									2014	912018



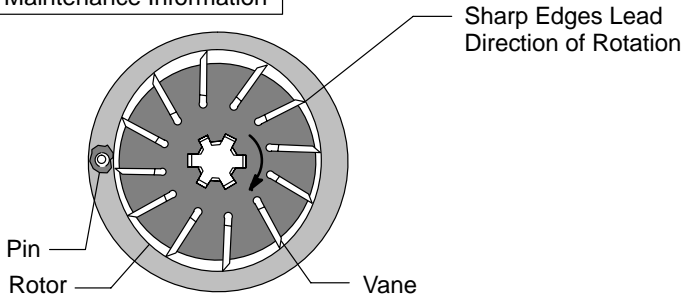
Pump Models V-VK-VS-VSK	Head Int.	Cap. GPM@ 0 psi	Bushing R.H. or L.H.		Pin	Rotor	Vane Kit (12 Vanes)	Ring	Bushing R.H. or L.H.		Cartridge Kit	
These Parts are Included in Cartridge Kits												
29-138-129	2322	15.4	222046	222045	2051	2042	912023	24188	222045	222046	912077	
39-138-139		19.5									2044	912078
39U-138U-139U		23.0									15482	912079
39X-138X-139X		29.9									2347	912080
49-148-149		37.9									2065	912024

-10 Design



See Service Manual I-3100-S for Maintenance Information

Right Hand Rotation Shown (Viewed from Drive Shaft End)

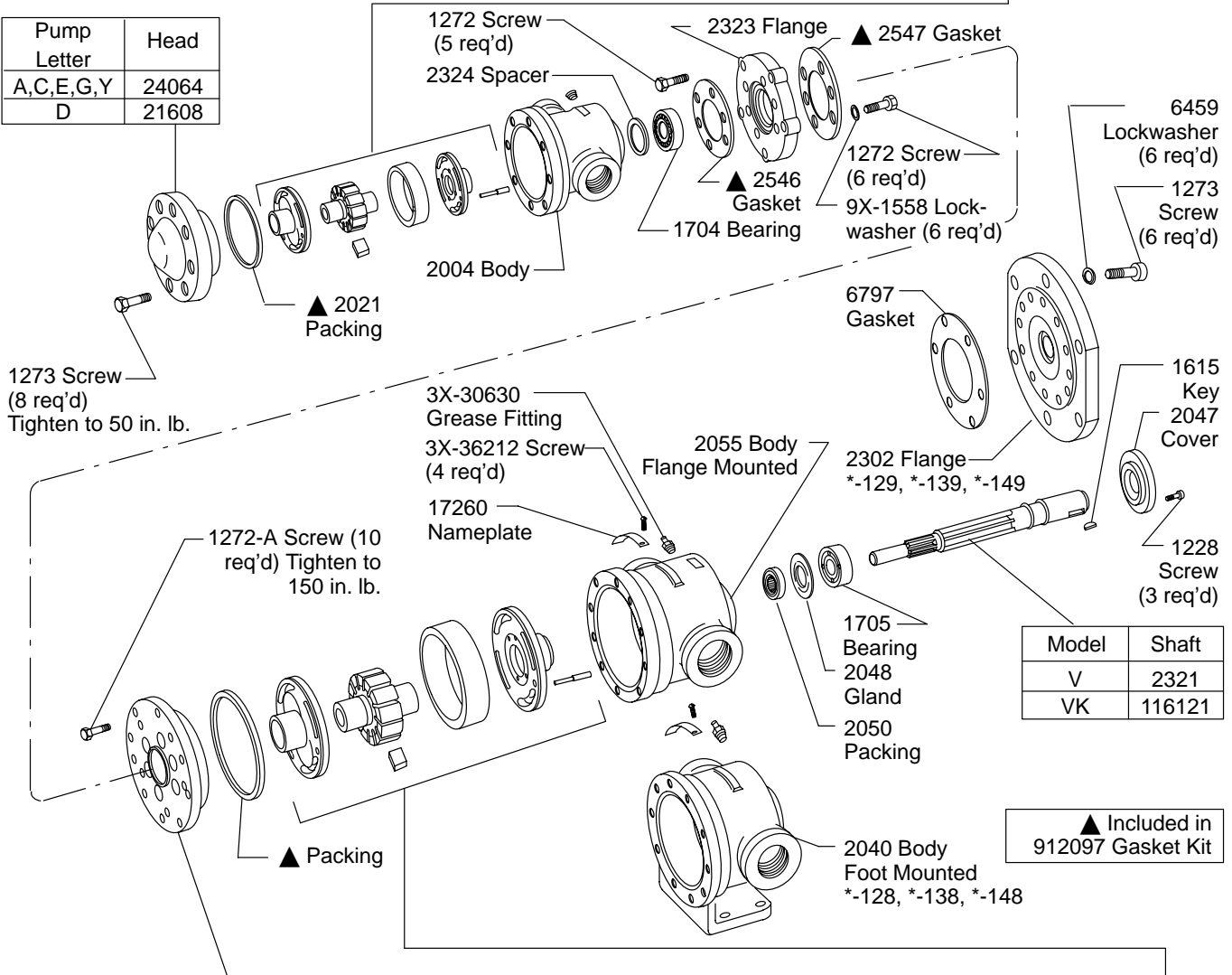


Assembly of the rotor and vanes is determined by the direction of pump shaft rotation. Vanes must be assembled so that the small beveled edges are trailing as shown for right hand rotation. Rotation is determined by viewing pump from shaft end.

Basic Design

Pump Letter	Cap. GPM@ 0 psi	Bushing R.H. or L.H.		Pin	Rotor	Vane Kit (12 Vanes)	Ring	Bushing R.H. or L.H.		Cartridge Kit
These Parts are Included in Cartridge Kits										
Y	1.8	2016	2015	2020	2008	912021	12220	2015	2016	912017
E	2.7						2299			912015
G	3.7						40151			912016
A	5.3						2011			912013
C	8.2						2013			912014
D	11.5						2007			912022

Pump Letter	Head
A,C,E,G,Y	24064
D	21608



Pump Models V-VK-VS-VSK	Head Int.	Cap. GPM@ 0 psi	Bushing R.H. or L.H.		Pin	Rotor	Vane Kit (12 Vanes)	Bushing R.H. or L.H.		Cartridge Kit	
These Parts are Included in Cartridge Kits											
29-138-129	2322	15.4	222046	222045	2051	2042	912023	24188	222045	222046	912077
39-138-139		19.5						2044			912078
39U-138U-139U		23.0						15482			912079
39X-138X-139X		29.9						2347			912080
49-148-149	2325	37.9				2065	912024	3246			912081

For satisfactory service life of these components in industrial applications, use full flow filtration to provide fluid which meets ISO cleanliness code 20/18/15 or cleaner. Selections from Eaton OFP, OFR, and OFRS series are recommended.

Eaton Hydraulics

15151 Highway 5
Eden Prairie, MN 55344
Telephone: 612 937-7254
Fax: 612 937-7130
www.eatonhydraulics.com

46 New Lane, Havant
Hampshire PO9 2NB
England
Telephone: (44) 170-548-6451
Fax: (44) 170-548-7110

