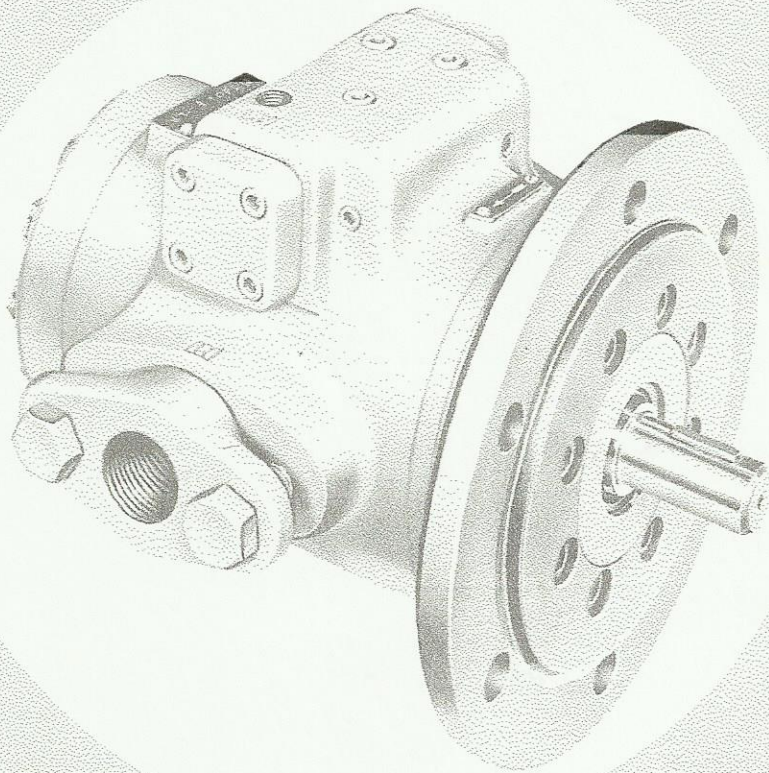


VICKERS

2-STAGE VANE PUMPS



**SERVICE
PARTS
INFORMATION**



Small Series
Models: V/VK-2304-2305-2311-2, 3 and 4 Design

VICKERS INCORPORATED

DIVISION OF SPERRY RAND CORPORATION

Machinery Hydraulics Division

Service Department

14420 Linwood Avenue

Detroit, Michigan 48238

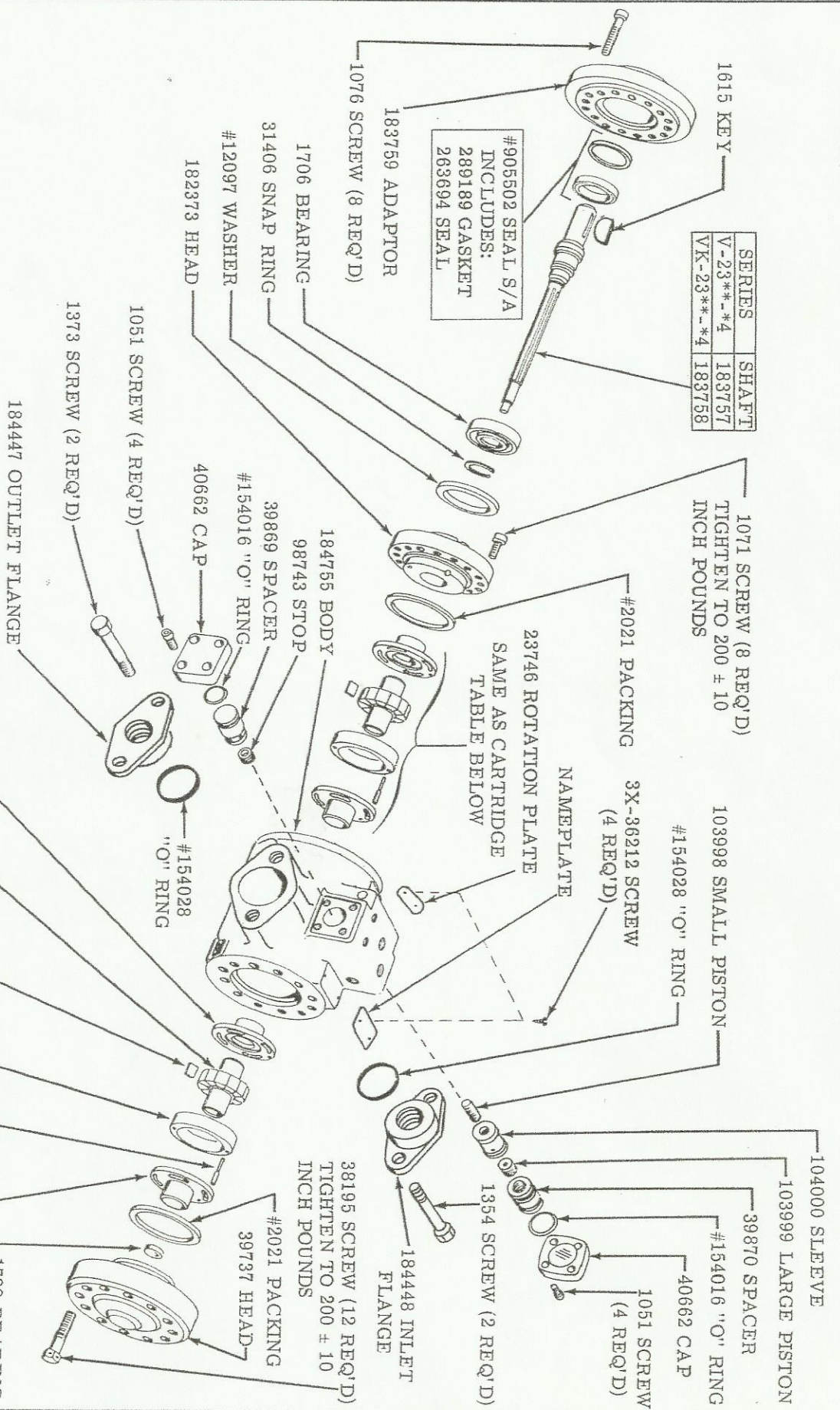
ATLANTA • CHICAGO • DETROIT • EL SEGUNDO • HOUSTON • SEATTLE • SPRINGFIELD, N. J. • TORONTO

I-3145-S

-4 DESIGN

SERIES	SHAFT
V-23**-*4	183757
VK-23**-*4	183758

#905502 SEAL S/A
INCLUDES:
289189 GASKET
263694 SEAL



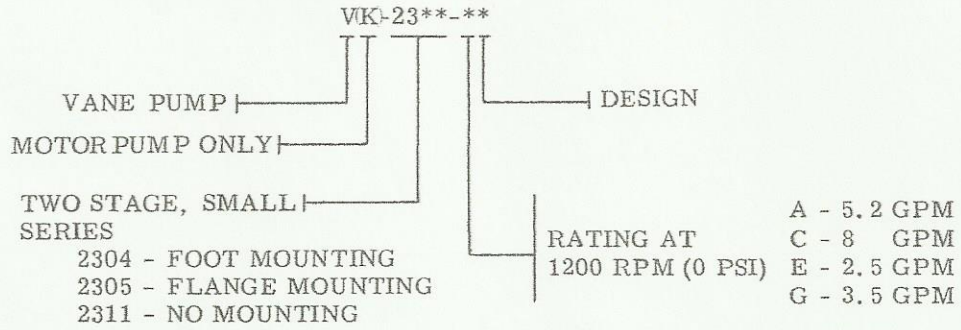
See page 3 for flange
and foot mountings
and pump rotation.

#INCLUDED IN 919001
GASKET KIT.

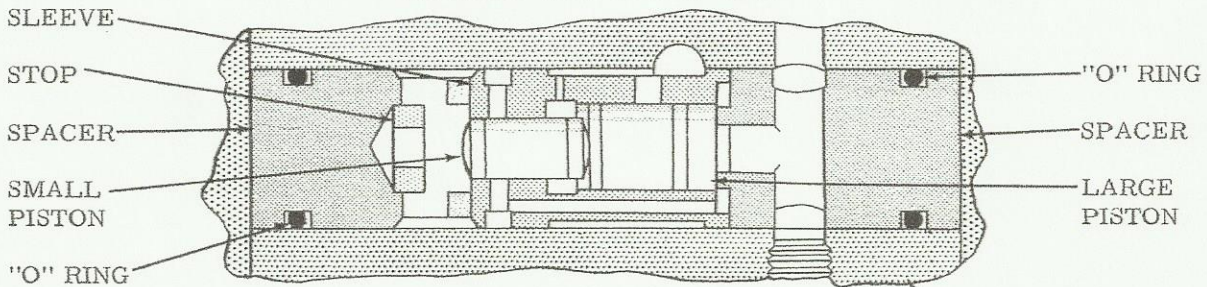
MODEL	BUSHING		ROTOR	VANE KIT (12 VANES)	RING	PIN	BUSHING		CARTRIDGE KITS
	R.H.	L.H.					R.H.	L.H.	
V-23**-A4			6779	912026	2011				912042
V-23**-C4			2008	912021	2299				912043
V-23**-E4			6779	912026	40151				912015
V-23**-G4									912046

THESE PARTS ARE INCLUDED IN CARTRIDGE KITS

MODEL CODE

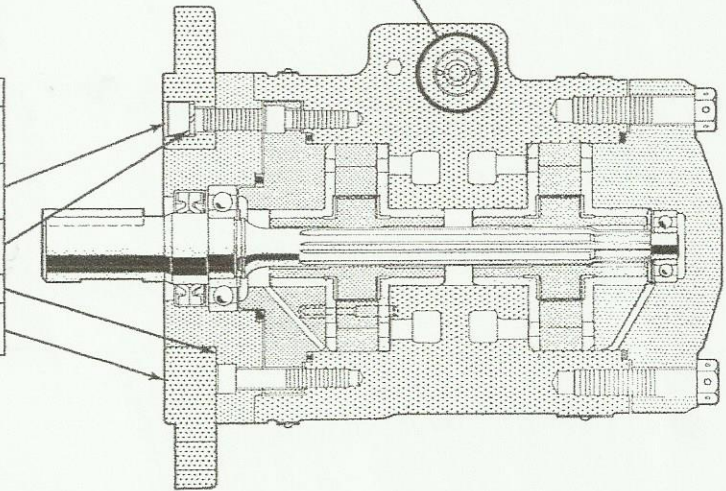


DIVIDING VALVE ASSEMBLY

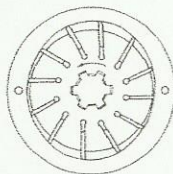


MOUNTING

MODEL	V-2304-**-**	V-2305-**-**	V-2311-**-**
MOUNTING TYPE	FOOT	FLANGE	NONE
SCREW (8 REQ'D)	1093	1093	---
LOCKWASHER (8 REQ'D)	---	9X-8543	---
GASKET	---	34312	---
FOOT	39788	12063	---
FLANGE	---	---	---



VANE AND ROTOR ASSEMBLY



Assembly of the rotor and vanes is determined by the direction of pump shaft rotation. Vanes must be assembled so that the small beveled edges are trailing as shown.

To insure sustained efficiency and maximum trouble-free life of this precision equipment, initial and continuous filtration of the fluid medium to 25 microns or less is essential. (For information pertaining to Vickers economical 10 micron filters, see installation drawing I & M 229847.)