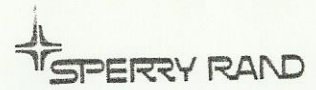


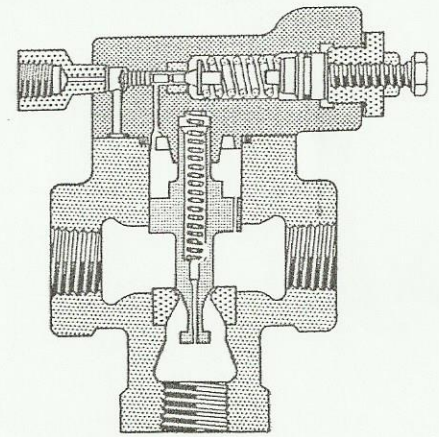
# SERVICE PARTS INFORMATION

## UNLOADING RELIEF VALVES

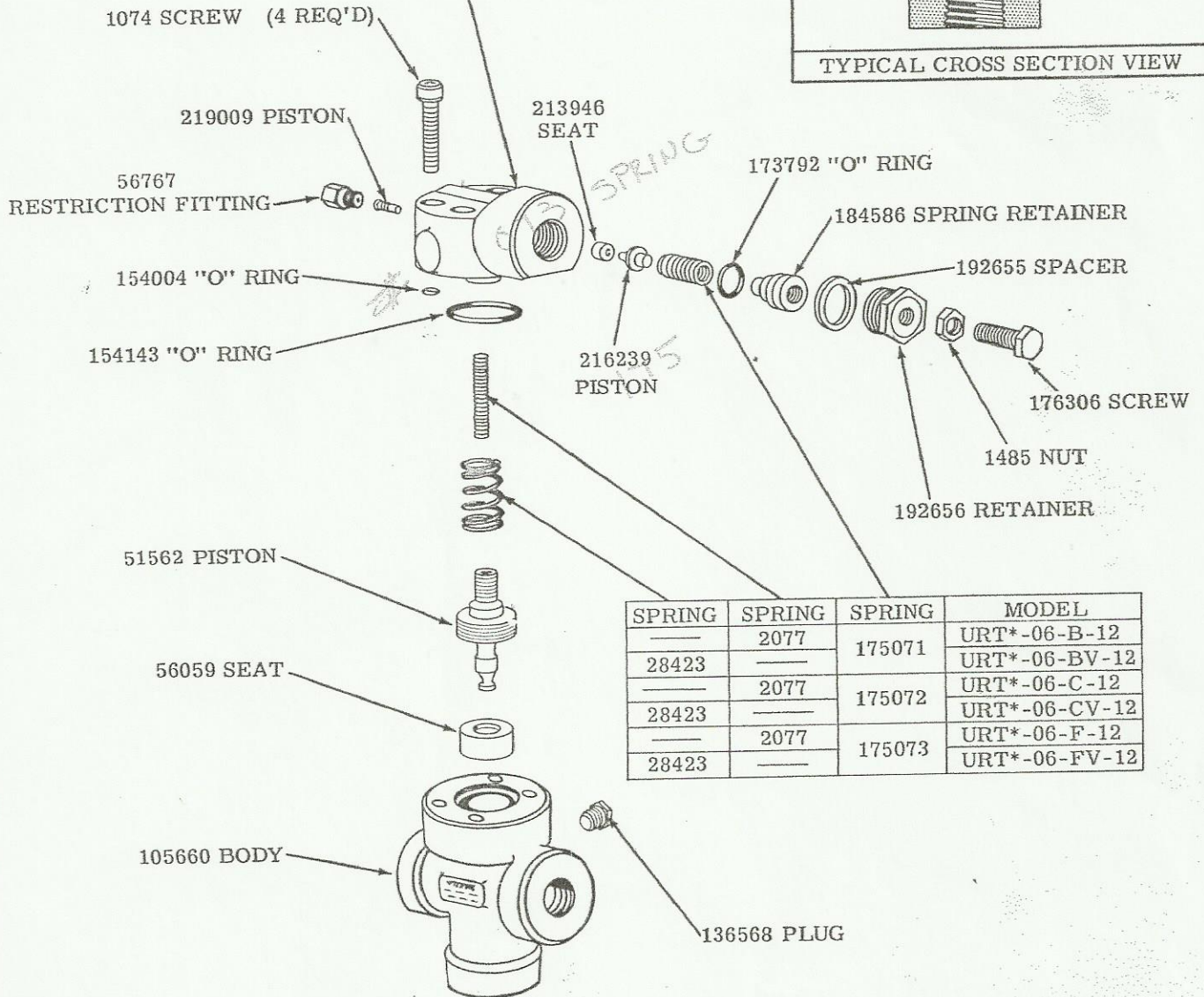


URT1-06-\*-12  
URT2-06-\*-12

MODEL	COVER	
URT1-06-*-12	EXTERNAL DRAIN	258330
URT2-06-*-12	INTERNAL DRAIN	176388 SUB-ASSY. INCLUDES: 274106 COVER 7075 PLUG



TYPICAL CROSS SECTION VIEW



SPRING	SPRING	SPRING	MODEL
—	2077	175071	URT*-06-B-12
28423	—	—	URT*-06-BV-12
—	2077	175072	URT*-06-C-12
28423	—	—	URT*-06-CV-12
—	2077	175073	URT*-06-F-12
28423	—	—	URT*-06-FV-12

URT1-10-\* -12  
URT2-10-\* -12

MODEL	COVER	
URT1-10-* -12	EXTERNAL DRAIN	258339
URT2-10-* -12	INTERNAL DRAIN	175811 SUB-ASSY. INCLUDES: 276256 COVER 7075 PLUG

MODEL CODE BREAKDOWN

URT1-10-B-12

UNLOADING  
RELIEF  
VALVE

THREADED  
TYPE

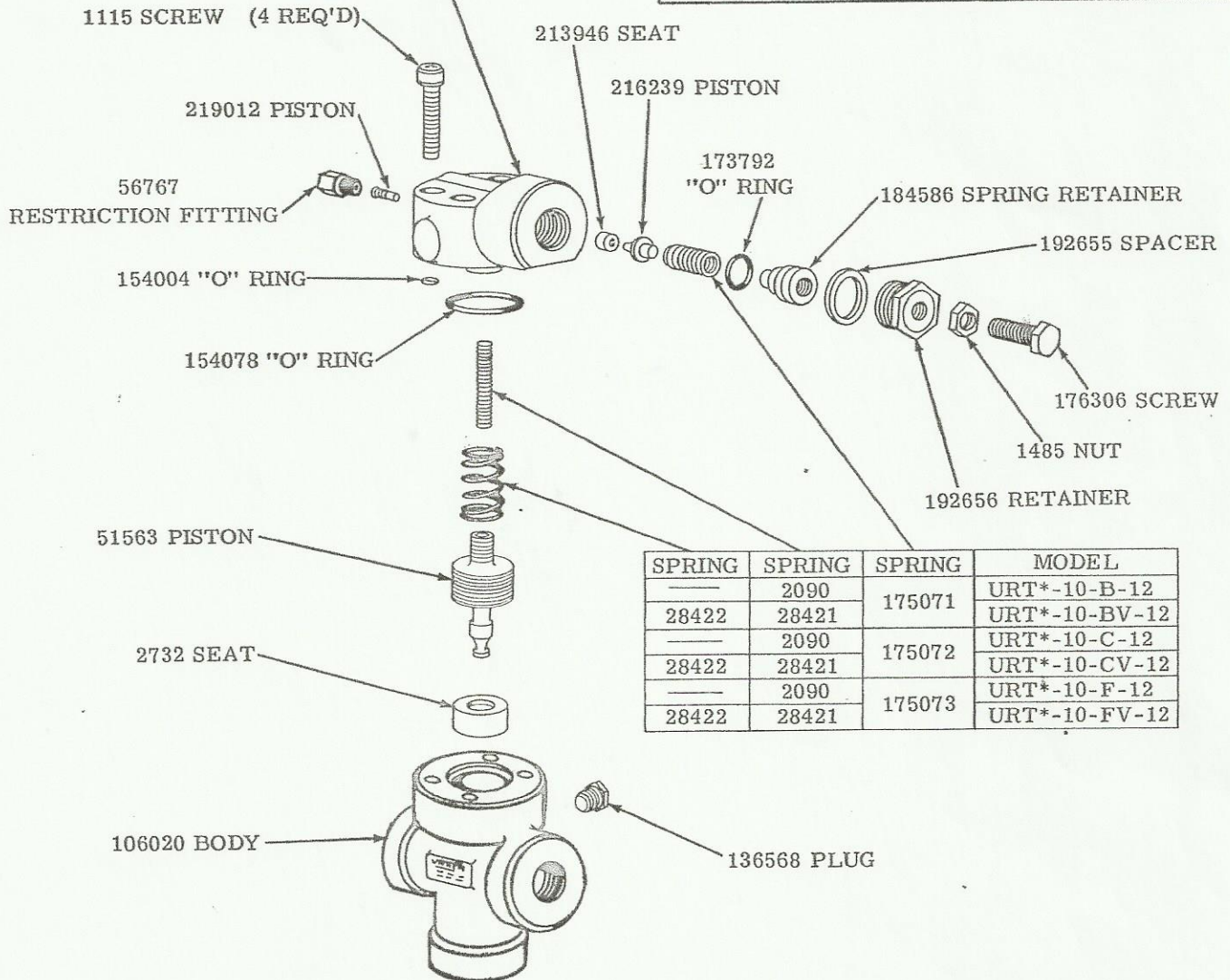
DRAIN  
1-EXTERNAL  
2-INTERNAL

DESIGN  
NUMBER

CUT OUT  
PRESSURE  
RANGES

B- 350 TO 1000 PSI  
C- 500 TO 2000 PSI  
F- 1500 TO 3000 PSI

PORT SIZE  
06-3/4" NPT  
10-1/4" NPT



SPRING	SPRING	SPRING	MODEL
—	2090	175071	URT*-10-B-12
28422	28421	—	URT*-10-BV-12
—	2090	175072	URT*-10-C-12
28422	28421	—	URT*-10-CV-12
—	2090	175073	URT*-10-F-12
28422	28421	—	URT*-10-FV-12

To insure sustained efficiency and maximum trouble-free life of this precision equipment, initial and continuous filtration of the fluid medium to 25 microns or less is essential. (For information pertaining to Vickers economical 10 micron filters, see installation drawing I & M 229847.)