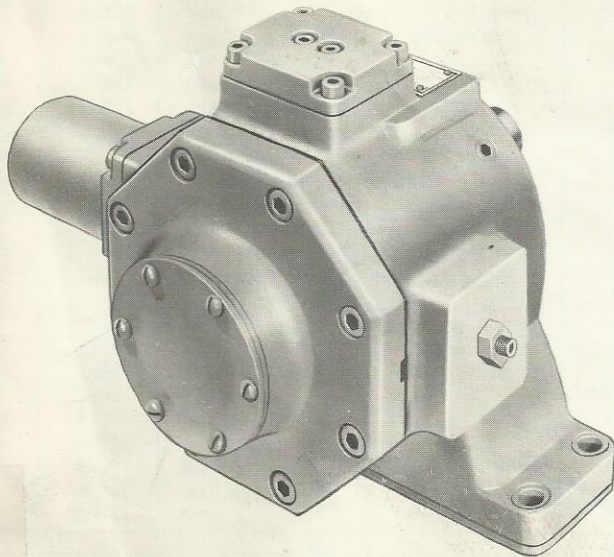




fluid power products



REPAIR PARTS

MODEL PVT

VARIABLE VOLUME VANE TYPE PUMP

SUBPLATE MOUNTED
FLANGED MOUNTED

WHEN ORDERING PARTS, FURNISH:

1. COMPLETE CODE NUMBER
2. PARTS REQUIRED
3. SHIPPING INSTRUCTIONS

WRITE FACTORY FOR NEAREST AUTHORIZED
PARTS AND SERVICE CENTER.

PUMP CODING

PVT-PNSO-25ER-10

P--PRESSURE COMPENSATOR (STANDARD)
J--HYDRAULIC DUAL PRESSURE (EXTERNAL)
S--SOLENOID CONTROLLED DUAL PRESSURE

C--FLANGED MOUNTED,
FLANGED CONNECTION

S--SUBPLATE MOUNTED

S--SCREW VOLUME CONTROL

N--NO VOLUME CONTROL

O--BUNA N SEALS

F--VITON SEALS

W--WATER GLYCOL

C--500 PSI

E--1000 PSI

R--RIGHT HAND ROTATION

L--LEFT HAND ROTATION

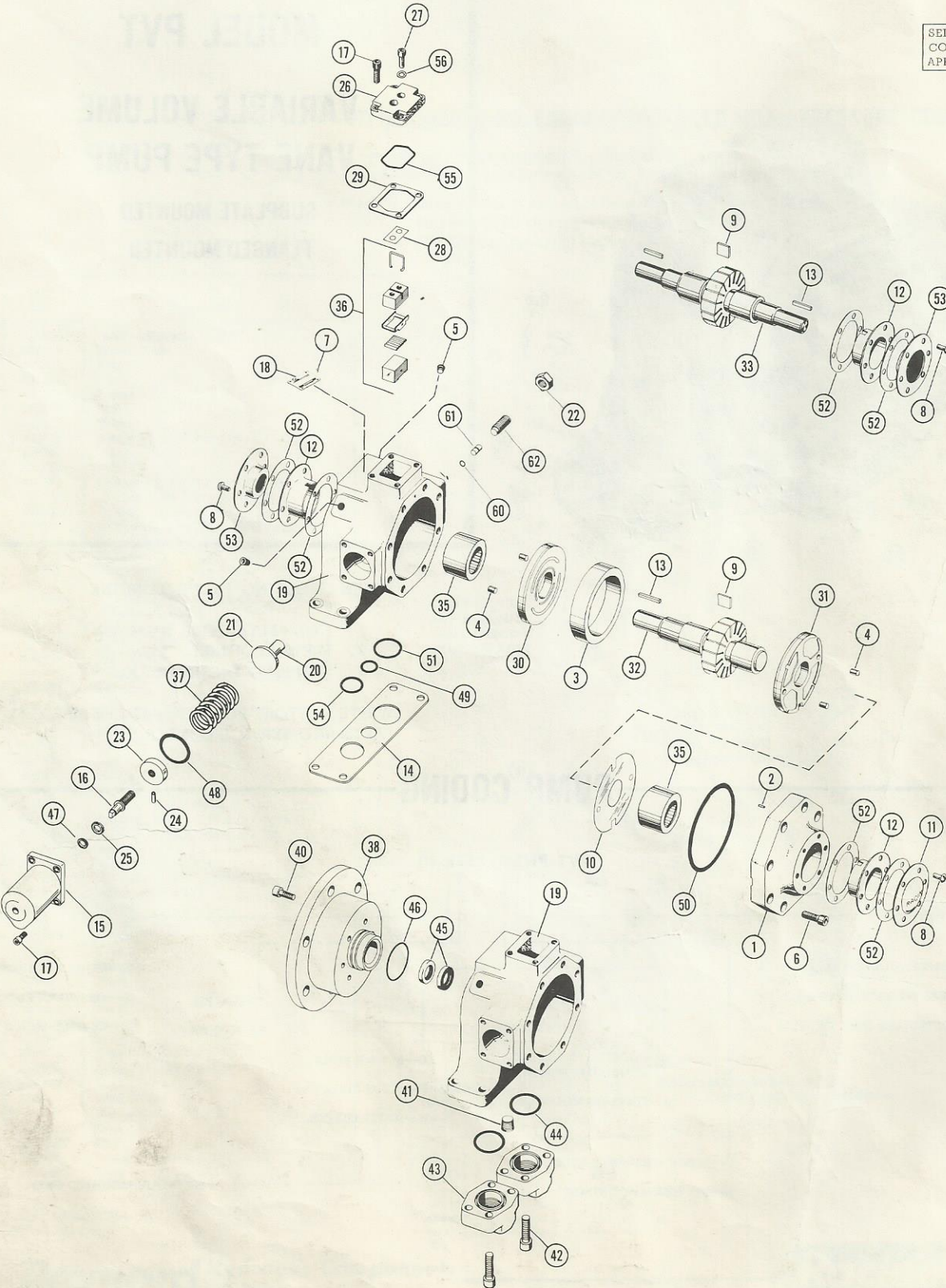
*D--DOUBLE-ENDED SHAFT

*SUBPLATE MOUNTED ONLY.

ABOVE STANDARD COMPENSATOR
APPEARS ON THIS PAGE.
FOR ADDITIONAL COMPENSATORS
SEE OPTION PAGE.

SEE MAIN PARTS LIST
FOR AVAILABLE SPRINGS.
(REFERENCE #37)

SELECT LETTER BELOW WHICH
CORRESPONDS TO THE LETTER
APPEARING IN YOUR PUMP CODE.



C
E
K
L
D

D

R
L

Ref. No.	Part No.	Description	Qty.
1	221757	Cover (Use with Journal Bearings)	1
1	221712	Cover	1
2	402265	Pin, 1/8 x 3/8	1
3	301131	Ring	1
4	301142	Pin	4
5	400928	Plug, 1/4" N. P. T. F.	2
6	400820	Screw, 7/16-14 x 1-1/4	8
7	401296	Screw	4
8	401605	Screw, 1/4-20 x 1/2	12
9	778271	Vanes (Set of 16)	1
10	405634	Shim .0010"	As Req'd
10	405635	Shim .0015"	As Req'd
10	405636	Shim .0020"	As Req'd
10	406327	Shim .005"	As Req'd
11	405640	Cap	1
12	405643	Spacer	2
13	405646	Key (2 Req'd on Double Ended Pump)	1
14	406100	Plate	1
15	222242	Housing	1
16	307914	Adjusting Screw	1
17	400798	Screw 5/16-18 x 3/4	8
18	406778	Nameplate	1
19	222241	Body, RH with Volume Control	1
19	222248	Body, LH with Volume Control	1
19	222249	Body, (Flange) RH with Volume Control	1
19	222256	Body, (Flange) LH with Volume Control	1
19	222250	Body, (Used with Journal Bearings) RH with Volume Control	1
19	222295	Body, RH without Volume Control	1
19	222255	Body, LH without Volume Control	1
20	307916	Governor Piston	1
21	307917	Piston Stop	1
22	401015	Nut, 5/8-18	1
23	307915	Spring Seat	1
24	406299	Roll Pin	1
25	491591	Washer	1
26	221716	Cap	1

Ref. No.	Part No.	Description	Qty.
27	400783	Screw, 1/4-20 x 5/8	2
28	404739	Shim .002"	As Req'd
28	404740	Shim .003"	As Req'd
28	404741	Shim .005"	As Req'd
29	405642	Plate	1
30	777729	Port Plate RH	1
30	777731	Port Plate LH	1
31	777730	Cover Plate RH	1
31	777732	Cover Plate LH	1
32	777298	Forging W/Inner Races (Subplate Pump)	1
32	777460	Forging W/Inner Races (Flange Pump)	1
33	777411	Forging - Double Ended W/Inner Races	1
35	405572	Bearing	2
35	777368	Journal Bearing	2
36	777301	Thrust Block	1
37	405846	Spring - 1000 psi	1
37	405961	Spring - 500 psi	1
38	221839	Flange	1
40	400808	Screw 3/8-16 x 1	6
41	400932	Plug 1/2 N. P. T.	1
42	400828	Screw 1/2-13 x 1-3/4	8
43	406432	Flange	2
44	401260	O-Ring, 1/8 x 1-7/8 x 2-1/8 Buna	2
44	406699	O-Ring, 1/8 x 1-7/8 x 2-1/8 Viton	2
45	406306	Seal	2
46	406307	O-Ring, 3/32 x 2-3/8 x 2-9/16 Buna	1
46	407098	O-Ring, 3/32 x 2-3/8 x 2-9/16 Viton	1
61	307913	Ram	1
62	405765	Screw	1

Buna Seal Kit No. 722389

KIT CONSISTS OF -

Ref. No.	Part No.	Description	Qty.
47	777796	Seal	1
48	401254	O-Ring, 1/8 x 2-1/8 x 2-3/8	1
49	404876	O-Ring, 3/32 x 1-1/8 x 1-5/16	1
50	402482	O-Ring, 1/8 x 5-1/8 x 5-3/4	1
51	403622	O-Ring, 3/32 x 1-5/16 x 2-1/8	1
52	405639	Gasket (2 Req'd on Flange Pump)	4
53	405644	Seal (2 Req'd on Double Ended Pump)	1
54	405400	O-Ring, 3/32 x 1-7/16 x 1-5/8	1
55	405637	O-Ring, (Molded)	1
56	490101	Gasket	2
60	401273	O-Ring, 1/16 x 1/4 x 3/8	1

Viton Seal Kit No. 722390

KIT CONSISTS OF -

Ref. No.	Part No.	Description	Qty.
47	777933	Seal	1
48	406268	O-Ring, 1/8 x 2-1/8 x 2-3/8	1
49	406709	O-Ring, 3/32 x 1-1/8 x 1-5/16	1
50	406701	O-Ring, 1/8 x 5-1/8 x 5-3/4	1
51	406710	O-Ring, 3/32 x 1-15/16 x 2-1/8	1
52	405639	Gasket (2 Req'd on Flange Pump)	4
53	405886	Seal (2 Req'd on Double Ended Pump)	1
54	406711	O-Ring, 3/32 x 1-7/16 x 1-5/8	1
55	406714	O-Ring, (Molded)	1
56	490101	Gasket	2
60	406270	O-Ring, 1/16 x 1/4 x 3/8	1

REPAIR PARTS KITS *

- SINGLE SHAFT-RIGHT HAND JOURNAL BEARINGS-VITON SEALS ----- 723476
- SINGLE SHAFT-RIGHT HAND ROTATION-STANDARD SEALS ----- 722495
- SINGLE SHAFT-RIGHT HAND ROTATION-VITON SEALS----- 722494
- SINGLE SHAFT-LEFT HAND ROTATION-STANDARD SEALS ----- 722496
- SINGLE SHAFT-LEFT HAND ROTATION-VITON SEALS----- 722497
- DOUBLE ENDED SHAFT-STANDARD SEALS----- 722760
- DOUBLE ENDED SHAFT-VITON SEALS----- 722761

* Each Kit contains the following parts:
 One pressure ring, one set vanes, all shims, one port plate, one cover plate,
 two bearings, one thrust block assembly, one shaft and rotor with bearing
 races, and one seal kit.

OPTIONS

HYDRAULIC & SOLENOID CONTROLLED DUAL PRESSURE COMPENSATORS

Solenoid two pressure compensator No. 956018
 Hydraulic two pressure compensator No. 956019

**NOTE: Adaptor Block to convert to Compact Valves
 Part No. 723383 plus adaptor block Part No.
 778320 to convert to D01 Valves.

Ref. No.	Part No.	Description	Qty.
83	307916	Governor Piston	1
84	307917	Piston Stop	1
85	405133	Roll Pin	1
86	777398	Body	1
87	307056	Piston	1
88	307057	Ram	1
89	307058	Tube	1
90	400790	Screw 5/16-18 x 1-1/4	4
91	400913	Washer	2
92	401101	Ring	1
93	401266	O-Ring, 1/8 x 2 x 2-1/4 Buna	1
93	406515	O-Ring, 1/8 x 2 x 2-1/4 Viton	1
94	401273	O-Ring, 1/16 x 1/4 x 3/8 Buna	3
94	406270	O-Ring, 1/16 x 1/4 x 3/8 Viton	3
95	401745	Connector	1
96	401751	Elbow	1
97	406200	Screw #10-24 x 2	2
98	406199	Cover	1
99	407042	O-Ring, 1/8 x 1-3/16 OD	1
99	406587	O-Ring, (Viton)	1
100	405641	Washer	1
101	405846	Spring - 1000 PSI	1
102	405850	Nut 7/8-14	1
103	406008	Screw 7/16-20 x 1-1/4	1
104	306693	Pin	1
105	306933	Pin	1
106	307036	Retainer	1
107	307050	Spool	1
108	307363	Cap	1
109	400801	Screw, 5/16-24 x 1/2	3
110	400932	Plug 1/2 N.P.T.F.	1
111	401253	O-Ring, 1/8 x 15/16 x 1-3/16 Buna	2
111	406271	O-Ring, 1/8 x 15/16 x 1-3/16 Viton	2
112	401272	O-Ring, 1/16 x 3/8 x 1/2 Buna	2
112	406269	O-Ring, 1/16 x 3/8 x 1/2 Viton	2
113	402265	Pin	2
114	403668	Screw 8-32 x 13/16	4
115	404186	O-Ring, .040 x .110 x .190 Buna	1
116	405514	Screw 8-32 x 1/2	4
117	405613	Gasket	1
118	405615	Gasket	1
*119	777607	Cover	1
120	405618	Seat	1
121	405619	Retainer	1
122	405621	Plate	1
123	405727	Spring	1
124	406012	Plate	1
125	405821	Rivet	1
126	405822	Rivet	1
127	406535	Screw 5/16-24 x 3/8	3
128	401892	Screw 1/4-20 x 2-1/4	4
129	777293	Seal	1
129	777454	Seal (Viton)	1
130	Table #1	Solenoid	1
131	Table #1	Coil	1
132	221806	Cap	1
133	403886	Screw 1/4-20 x 1-1/2	4
**134	777395	Body	1

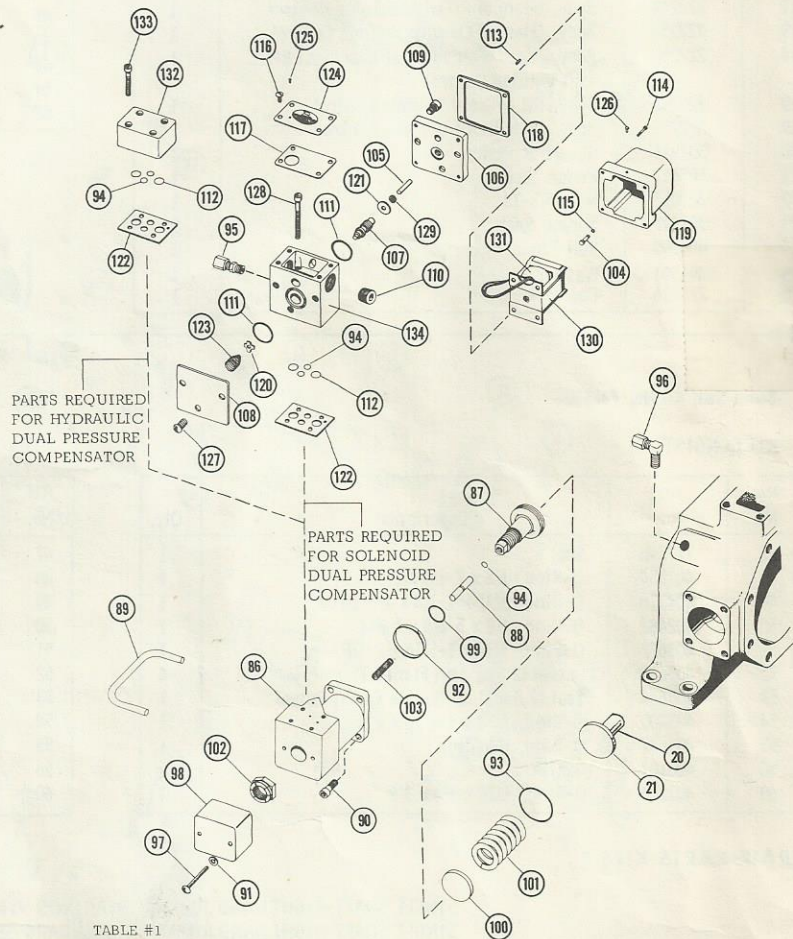


TABLE #1

AC SOLENOIDS		
Complete Solenoid (130)	Coil Only (131)	AC Voltage
405622	405631	115/60
405624	405632	230/60
405625	405633	460/60
406106	406108	110/50
406107	406109	220/50

NOTE: PARTS SHOWN ARE FOR RIGHT HAND ROTATION PUMP.

*777607 Cover includes Ref. No. 104, 114, 115, 119, 126