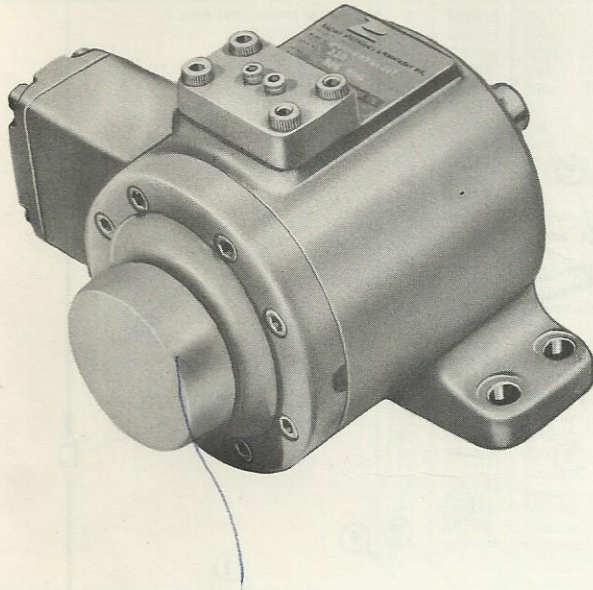




fluid power products

REPAIR PARTS

SUB P



MODEL PVQ

VARIABLE VOLUME VANE TYPE PUMP

SUBPLATE MOUNTED

WHEN ORDERING PARTS, FURNISH:

1. COMPLETE CODE NUMBER
2. PARTS REQUIRED
3. SHIPPING INSTRUCTIONS

WRITE FACTORY FOR NEAREST AUTHORIZED PARTS AND SERVICE CENTER.

PUMP CODING

PVQ-PNSO-06ER-20

P--PRESSURE COMPENSATOR (STANDARD)

J--HYDRAULIC DUAL PRESSURE (EXTERNAL)

O--SOLENOID-CONTROLLED DUAL PRESSURE
(WITH OIL-IMMERSED SOLENOID)

S--SOLENOID-CONTROLLED DUAL PRESSURE

O--BUNA N SEALS

F--VITON SEALS

B--250 PSI

C--500 PSI

E--1000 PSI

R--RIGHT HAND ROTATION

D--DOUBLE-ENDED SHAFT

Q--LEFT HAND ROTATION
OPPOSITE DRIVE SHAFT

PVQ-PNSO-06***-20

STANDARD COMPENSATOR APPEARS ON THIS PAGE. FOR ADDITIONAL COMPENSATORS SEE OPTION PAGE.

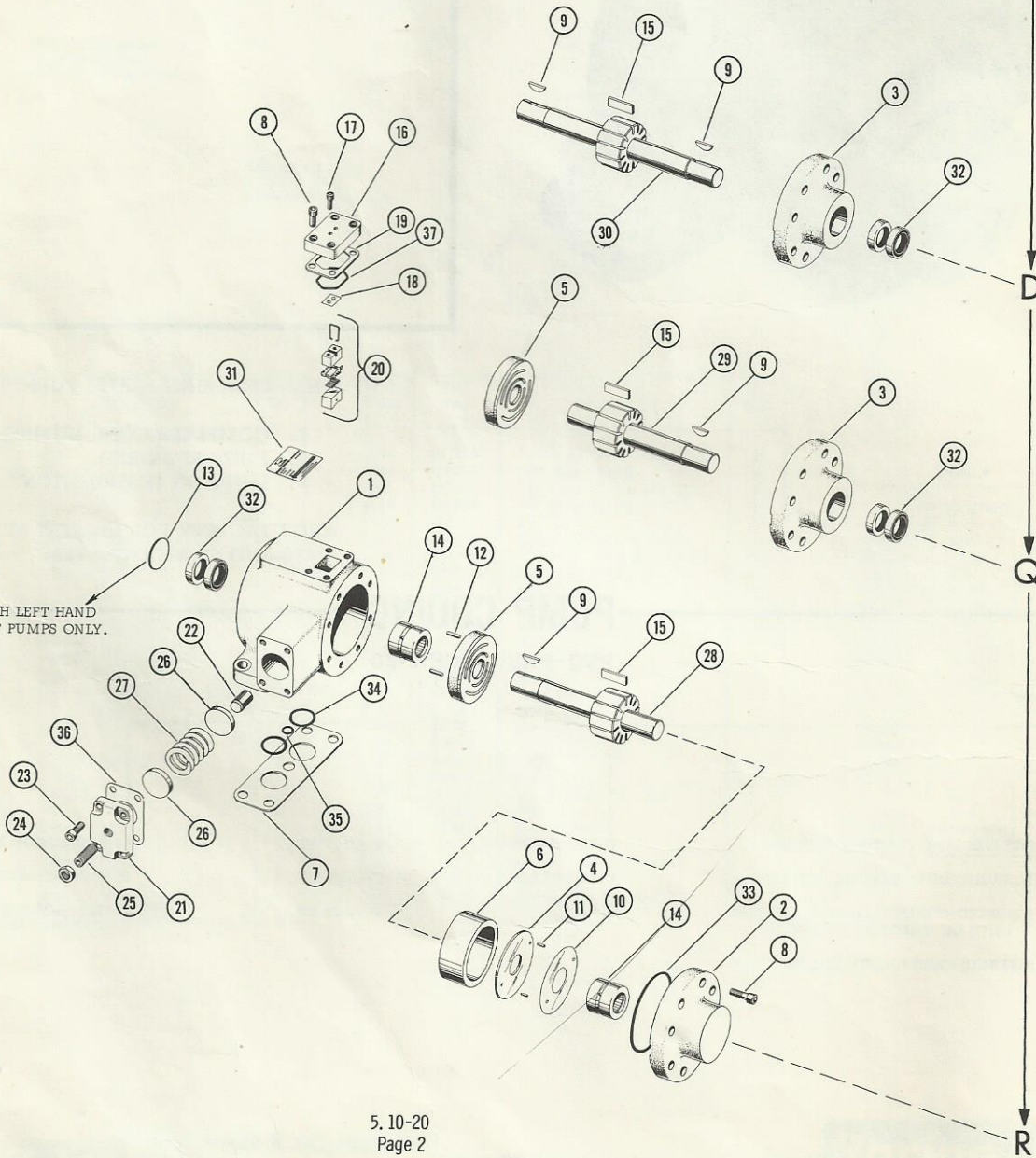
B
C
E

R
D
Q

SELECT LETTER BELOW WHICH CORRESPONDS TO THE LETTER APPEARING IN YOUR PUMP CODE.

SEE MAIN PARTS LIST FOR AVAILABLE SPRINGS. (REFERENCE #27)

PLUG USED WITH LEFT HAND OPPOSITE SHAFT PUMPS ONLY.



| Ref. No. | Part No. | Description | Qty. |
|----------|----------|------------------------------------|----------|
| 1 | 221891 | Body | 1 |
| 2 | 221892 | Cover | 1 |
| 3 | 221908 | Cover | 1 |
| 4 | 290177 | Plate | 1 |
| 5 | 777496 | Plate | 1 |
| 6 | 304647 | Ring | 1 |
| 7 | 305520 | Plate | 1 |
| 8 | 400780 | Screw 1/4-20 x 3/4 | 12 |
| 9 | 401122 | Key (2 Req'd on Double Ended Pump) | 2/1 |
| 10 | 402319 | Shim .001" | As Req'd |
| 10 | 402320 | Shim .0015" | As Req'd |
| 10 | 402321 | Shim .002" | As Req'd |
| 10 | 404779 | Shim .003" | As Req'd |
| 11 | 402386 | Pin | 2 |
| 12 | 404731 | Pin | 2 |
| 13 | 406464 | Plug - Use with LH Rotation | 1 |
| 14 | 405206 | Bearing | 2 |
| 15 | 778267 | Vanes (Set of 12) | 1 |
| 16 | 221299 | Cap | 1 |
| 17 | 400772 | Screw #8-32 x 5/8 | 2 |
| 18 | 402316 | Shim .002" | As Req'd |
| 18 | 402317 | Shim .003" | As Req'd |
| 18 | 402318 | Shim .005" | As Req'd |
| 19 | 405230 | Plate | 1 |
| 20 | 777184 | Thrust Block | 1 |
| 21 | 221901 | Cap | 1 |
| 22 | 308188 | Piston | 1 |
| 23 | 400781 | Screw 1/4-20 x 5/8 | 4 |
| 24 | 406426 | Nut | 1 |
| 25 | 406427 | Screw 3/8-24 x 1 | 1 |
| 26 | 307298 | Washer | 2 |
| 27 | 406457 | Spring - 1000 PSI | 1 |
| 27 | 406458 | Spring - 500 PSI | 1 |
| 27 | 406459 | Spring - 250 PSI | 1 |
| 28 | 307120 | Forging - RH | 1 |
| 29 | 307280 | Forging - LH | 1 |
| 30 | 307281 | Forging - Double-Ended | 1 |
| 31 | 406450 | Nameplate | 1 |

**STANDARD SEAL KIT
722382**

| KIT CONSISTS OF - | | | |
|-------------------|----------|-------------------------------------|------|
| Ref. No. | Part No. | Description | Qty. |
| 32 | 406415 | Seal (4 Req'd on Double Ended Pump) | 2 |
| 33 | 406421 | "O" Ring 3/32 x 2-15/16 OD | 1 |
| 34 | 404070 | "O" Ring 1/16 x 1 OD | 2 |
| 35 | 401272 | "O" Ring 1/16 x 1/2 OD | 1 |
| 36 | 405738 | Gasket | 1 |
| 37 | 405231 | "O" Ring | 1 |

USED WITH MINERAL OIL AND WATER BASED FLUIDS.

**VITON SEAL KIT
722418**

| KIT CONSISTS OF - | | | |
|-------------------|----------|-------------------------------------|------|
| Ref. No. | Part No. | Description | Qty. |
| 32 | 406439 | Seal (4 Req'd on Double Ended Pump) | 1/2 |
| 33 | 406708 | "O" Ring 3/32 x 2-15/16 OD | 1 |
| 34 | 406707 | "O" Ring 1/16 x 1 OD | 2 |
| 35 | 406269 | "O" Ring 1/16 x 1/2 OD | 1 |
| 36 | 405738 | Gasket | 1 |
| 37 | 406713 | "O" Ring | 1 |

USED WITH SYNTHETIC FLUIDS (PHOSPHATE ESTER AND HALOGENATED BASE).

ADAPTOR KIT TO CONVERT FROM Q PUMP TO SV-10-NO. 950102

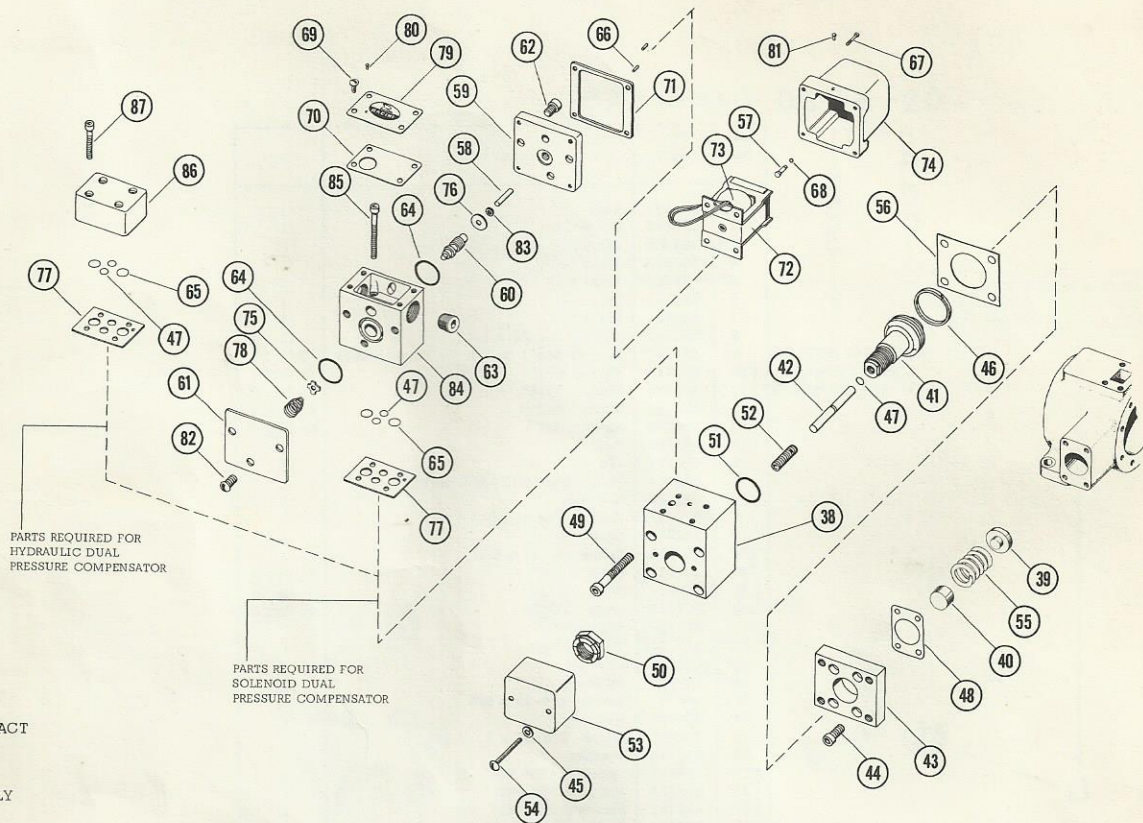
REPAIR PARTS KITS*

SINGLE SHAFT-RIGHT HAND ROTATION-STANDARD SEALS----- NO. 722498
 SINGLE SHAFT-LEFT HAND ROTATION-STANDARD SEALS----- NO. 722566
 SINGLE SHAFT-RIGHT HAND ROTATION-VITON SEALS----- NO. 722499
 SINGLE SHAFT-LEFT HAND ROTATION-VITON SEALS----- NO. 722568
 DOUBLE ENDED SHAFT-STANDARD SEALS----- NO. 722751
 DOUBLE ENDED SHAFT-VITON SEALS----- NO. 722752
 SINGLE SHAFT, RIGHT HAND ROTATION, STD. SEALS JOURNAL BEARINGS NO. 723347

*Each kit contains the following parts:
 One pressure ring, one set vanes, all shims, one port plate, one cover plate,
 two bearings, one thrust block assembly, one shaft and rotor, and one seal kit.

OPTIONS

HYDRAULIC & SOLENOID CONTROLLED DUAL PRESSURE COMPENSATORS



| Ref. No. | Part No. | Description | Qty. |
|----------|----------|---------------------------|------|
| 38 | 221967 | Body | 1 |
| 39 | 307284 | Piston | 1 |
| 40 | 307298 | Washer | 1 |
| 41 | 307361 | Piston | 1 |
| 42 | 307364 | Ram | 1 |
| 43 | 307503 | Adapter | 1 |
| 44 | 400783 | Screw 1/4-20 x 7/8 | 4 |
| 45 | 400913 | Lockwasher | 2 |
| 46 | 401100 | Ring | 1 |
| 47 | 401273 | "O" Ring 1/16 x 3/8 OD | 3 |
| 47 | 406270 | "O" Ring (Viton) | 3 |
| 48 | 405738 | Gasket | 1 |
| 49 | 405110 | Screw 5/16-18 x 2-3/4 | 4 |
| 50 | 405850 | Nut 7/8-14 | 1 |
| 51 | 405974 | Quad Ring 1/8 x 1-3/16 OD | 1 |
| 51 | 406587 | "O" Ring (Viton) | 1 |
| 52 | 406008 | Screw 7/16-20 x 1-1/4 | 1 |
| 53 | 406199 | Cover | 1 |
| 54 | 406200 | Screw #10-24 x 2 | 2 |
| 55 | 406457 | Spring | 1 |
| 56 | 406624 | Gasket | 1 |
| 57 | 306693 | Pin | 1 |
| 58 | 306933 | Pin | 1 |
| 59 | 307036 | Retainer | 1 |
| 60 | 307050 | Spool | 1 |
| 61 | 307363 | Cap | 1 |
| 62 | 400801 | Screw 5/16-24 x 1/2 | 3 |
| 63 | 400932 | Plug 1/2 N.P.T.F. | 1 |

| Ref. No. | Part No. | Description | Qty. |
|----------|----------|--------------------------|------|
| 64 | 401253 | "O" Ring 1/8 x 1-3/16 OD | 2 |
| 64 | 406271 | "O" Ring (Viton) | 2 |
| 65 | 401272 | "O" Ring 1/16 x 1/2 OD | 2 |
| 65 | 406269 | "O" Ring (Viton) | 2 |
| 66 | 402265 | Pin | 2 |
| 67 | 403668 | Screw #8-32 x 13/16 | 4 |
| 68 | 404186 | "O" Ring .040 x 3/16 OD | 1 |
| 69 | 405514 | Screw #8-32 x 1/2 | 4 |
| 70 | 405613 | Gasket | 1 |
| 71 | 405615 | Gasket | 1 |
| 72 | Table #1 | Solenoid | 1 |
| 73 | Table #1 | Coil | 1 |
| 74 | 405617 | Cover | 1 |
| 75 | 405618 | Seat | 1 |
| 76 | 405619 | Retainer | 1 |
| 77 | 405621 | Plate | 1 |
| 78 | 405727 | Spring | 1 |
| 79 | 406012 | Plate | 1 |
| 80 | 405821 | Rivet | 1 |
| 81 | 405822 | Rivet | 1 |
| 82 | 406535 | Screw 5/16-24 x 3/8 | 3 |
| 83 | 777293 | Seal | 1 |
| 83 | 777454 | Seal (Viton) | 1 |
| 84 | 777395 | Body | 1 |
| 85 | 401882 | Screw 1/4-20 x 2-1/4 | 4 |
| 86 | 221806 | Cap | 1 |
| 87 | 403886 | Screw 1/4-20 x 1-1/2 | 1 |

TABLE # 1

| AC SOLENOIDS | | |
|------------------------|----------------|------------|
| Complete Solenoid (72) | Coil Only (73) | AC Voltage |
| 405622 | 405631 | 115/60 |
| 405624 | 405632 | 230/60 |
| 405625 | 405633 | 460/60 |
| 406106 | 406108 | 110/50 |
| 406107 | 406109 | 220/50 |
| OIL IMMERSED SOLENOIDS | | |
| Complete Solenoid (72) | | AC Voltage |
| 407374 | | 115/60 |
| 407375 | Coil | 230/60 |
| 407376 | Not Available | 460/60 |
| 407377 | | 115/50 |
| 407378 | | 230/50 |