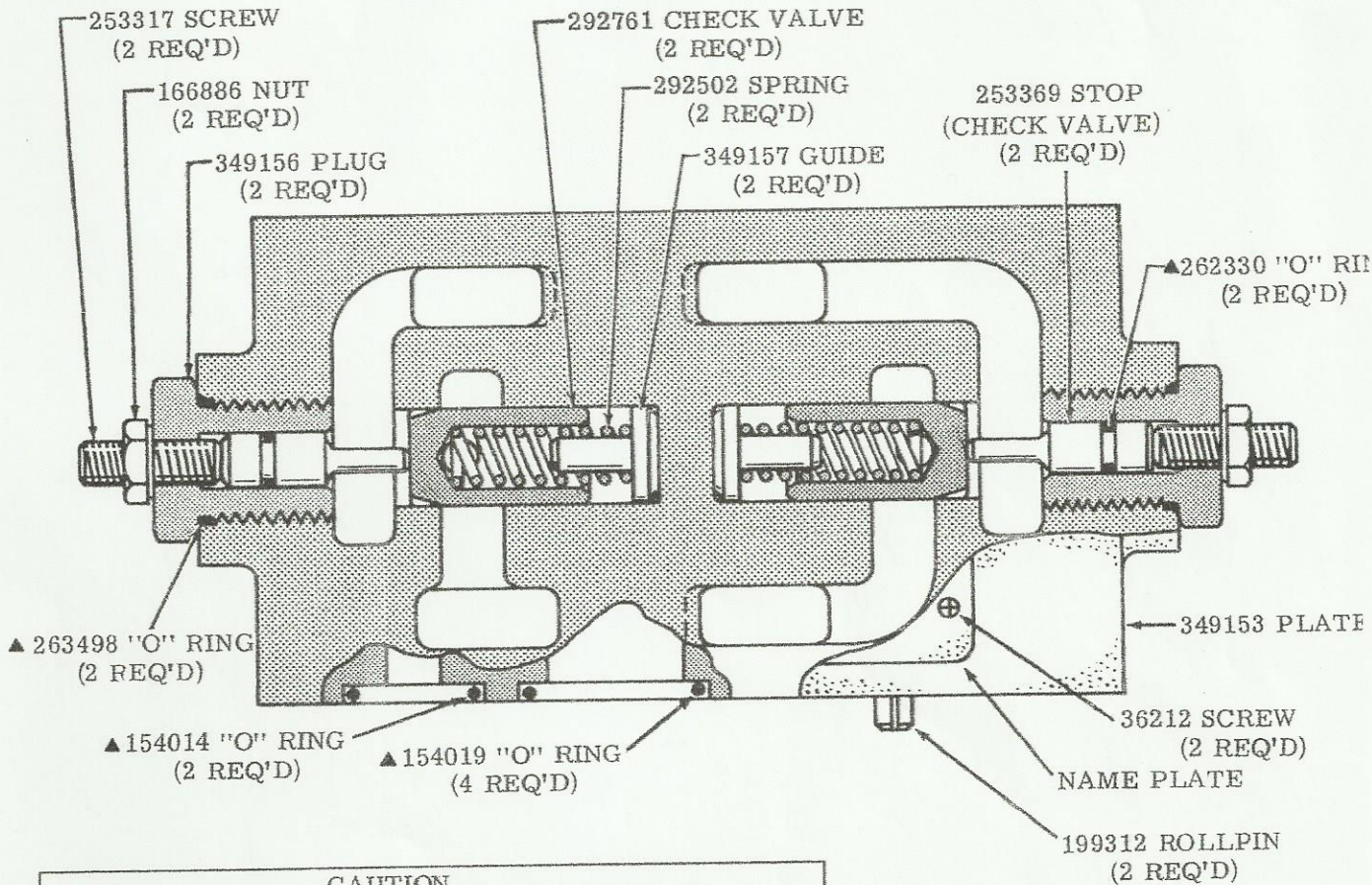




**MODULAR FLOW
REGULATOR
VALVES**

Service Parts Information

DGFN-06-50



CAUTION
THIS VALVE CANNOT BE USED WITH PRESSURE CENT-
ERED OR DG-18 AIR OPERATED VALVES.

NOTE
REFER TO INSTALLATION DRAWING 522650 FOR BOLT
KIT INFORMATION AND MODULE STACKING DATA. THE
MOUNTING BOLT TORQUE SHOULD NOT EXCEED A
MAXIMUM OF 700 IN. LBS.

NOTE
THE FOLLOWING SUBPLATES MAY BE USED TO MOUNT
A 60 SERIES DIRECTIONAL VALVE AND ONE OR MORE
MODULAR VALVES:

DGSM-06-50	(3/4 INCH NPT)	ASSY. NO. 280497
DGSM-06X-50	(1 INCH NPT)	ASSY. NO. 280498
DGSM-06Y-50	(1-1/4 INCH NPT)	ASSY. NO. 315213

INCLUDED IN
919646 SEAL KIT

MODEL CODE BREAKDOWN

