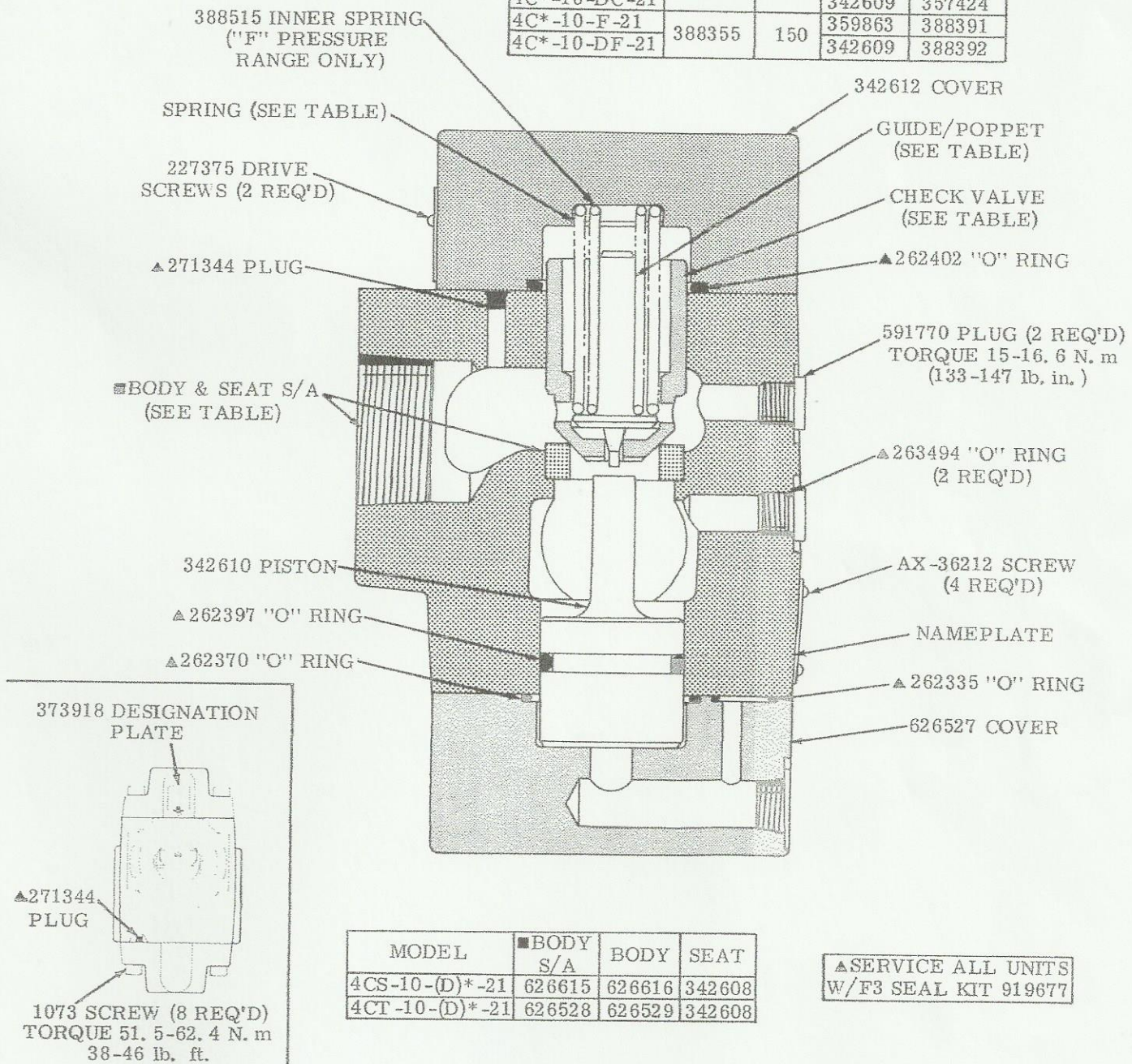


Service Parts  
Information

PILOT OPERATED CHECK VALVE

4CS-10-(D)\*-21  
4CT-10-(D)\*-21

MODEL	SPRING	P.S.I.	CHECK VALVE	GUIDE/POPPET
4C*-10-A-21	352444	30	359863	359862
4C*-10-DA-21			342609	357424
4C*-10-C-21	388354	75	359863	359862
4C*-10-DC-21			342609	357424
4C*-10-F-21	388355	150	359863	388391
4C*-10-DF-21			342609	388392



MODEL	BODY S/A	BODY	SEAT
4CS-10-(D)*-21	626615	626616	342608
4CT-10-(D)*-21	626528	626529	342608

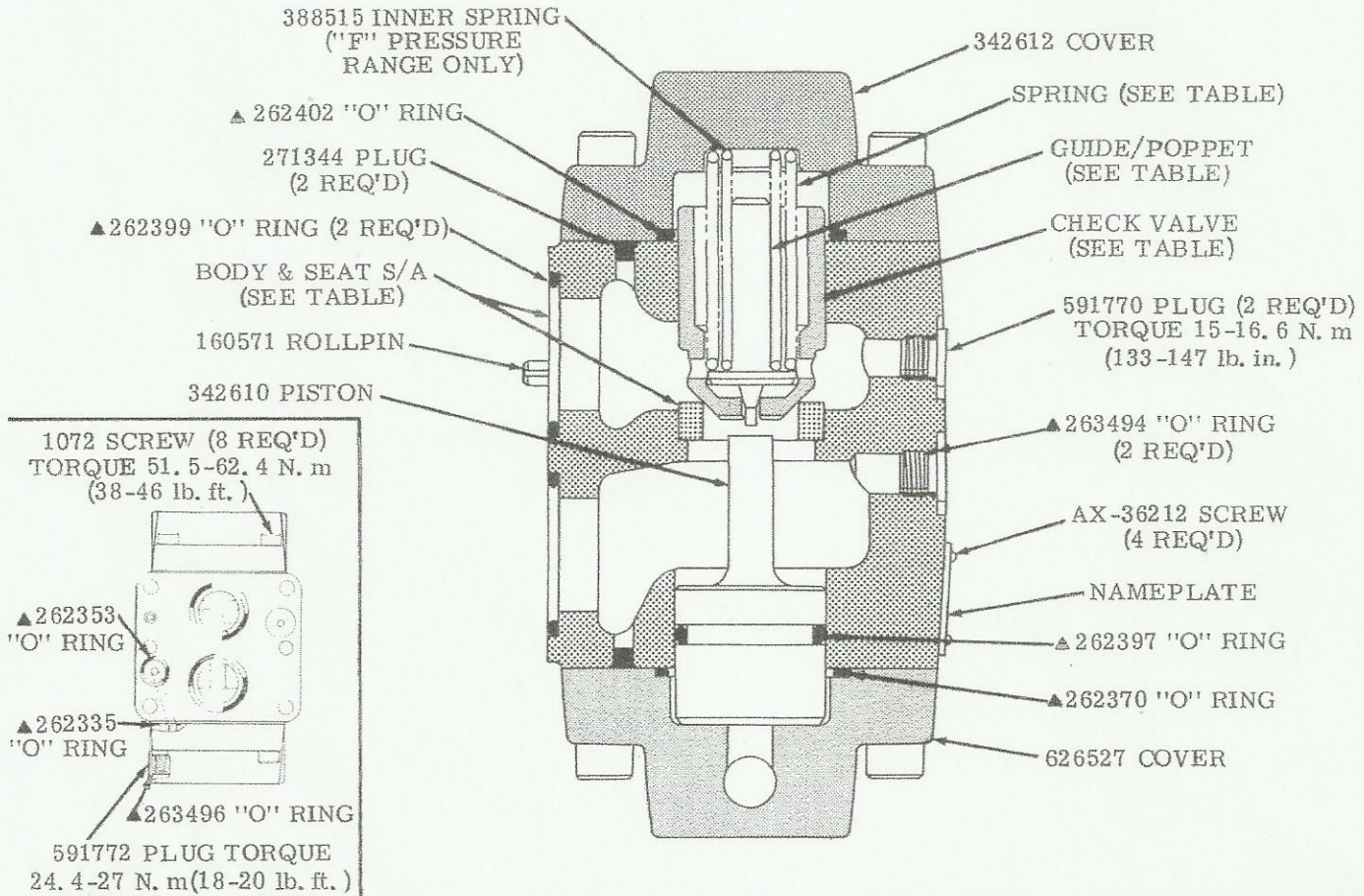
▲SERVICE ALL UNITS  
W/F3 SEAL KIT 919677

4CG-10-(D)\*-21

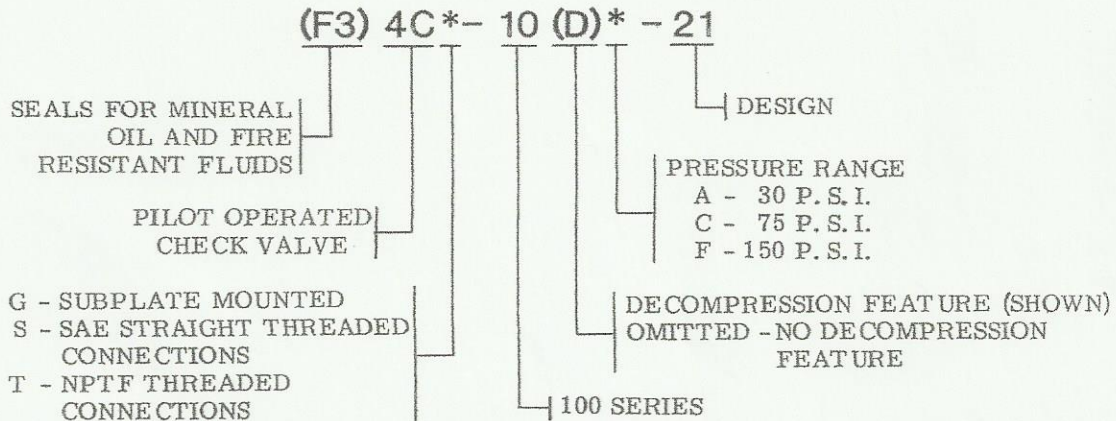
▲SERVICE ALL UNITS  
W/F3 SEAL KIT 919679

626530 BODY & SEAT  
SUBASSY INCLUDES:  
342608 SEAT  
626531 BODY

MODEL	SPRING	P.S.I.	GUIDE/ POPPET	CHECK VALVE
4CG-10-A-21	352444	30	359862	359863
4CG-10-DA-21			357424	342609
4CG-10-C-21	388354	75	359862	359863
4CG-10-DC-21			357424	342609
4CG-10-F-21	388355	150	388391	359863
4CG-10-DF-21			388392	342609



## MODEL CODE BREAKDOWN



To insure sustained efficiency and maximum trouble-free life of this precision equipment, initial and continuous filtration of the fluid medium to 25 microns absolute or less is essential. (For information pertaining to Sperry Vickers economical filters, see bulletin 81-216.)