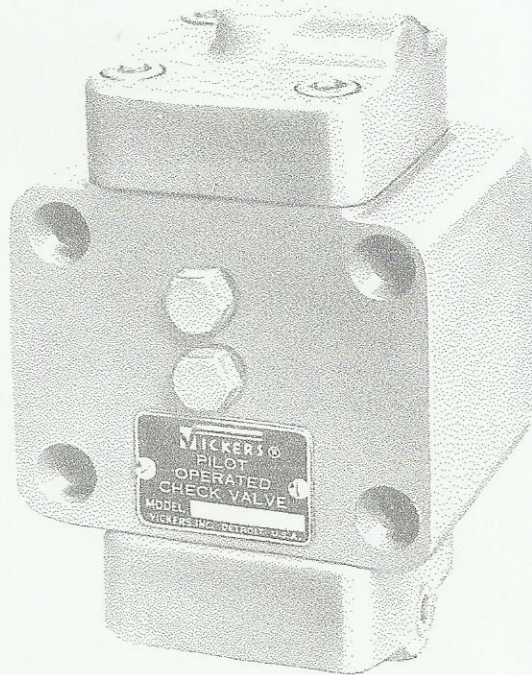


VICKERS

PILOT OPERATED  
GASKET MOUNTED  
CHECK VALVES



SERVICE  
PARTS  
INFORMATION



Model Series

4CG-03-\* -10, 4CG-06-\* -10

4CG-10-\* -10, 4CG-10-\* -11

VICKERS INCORPORATED

DIVISION OF SPERRY RAND CORPORATION

Machinery Hydraulics Division

Service Department

14420 Linwood Avenue

Detroit, Michigan 48238

ATLANTA • CHICAGO • DETROIT • EL SEGUNDO • HOUSTON • SEATTLE • SPRINGFIELD, N. J. • TORONTO

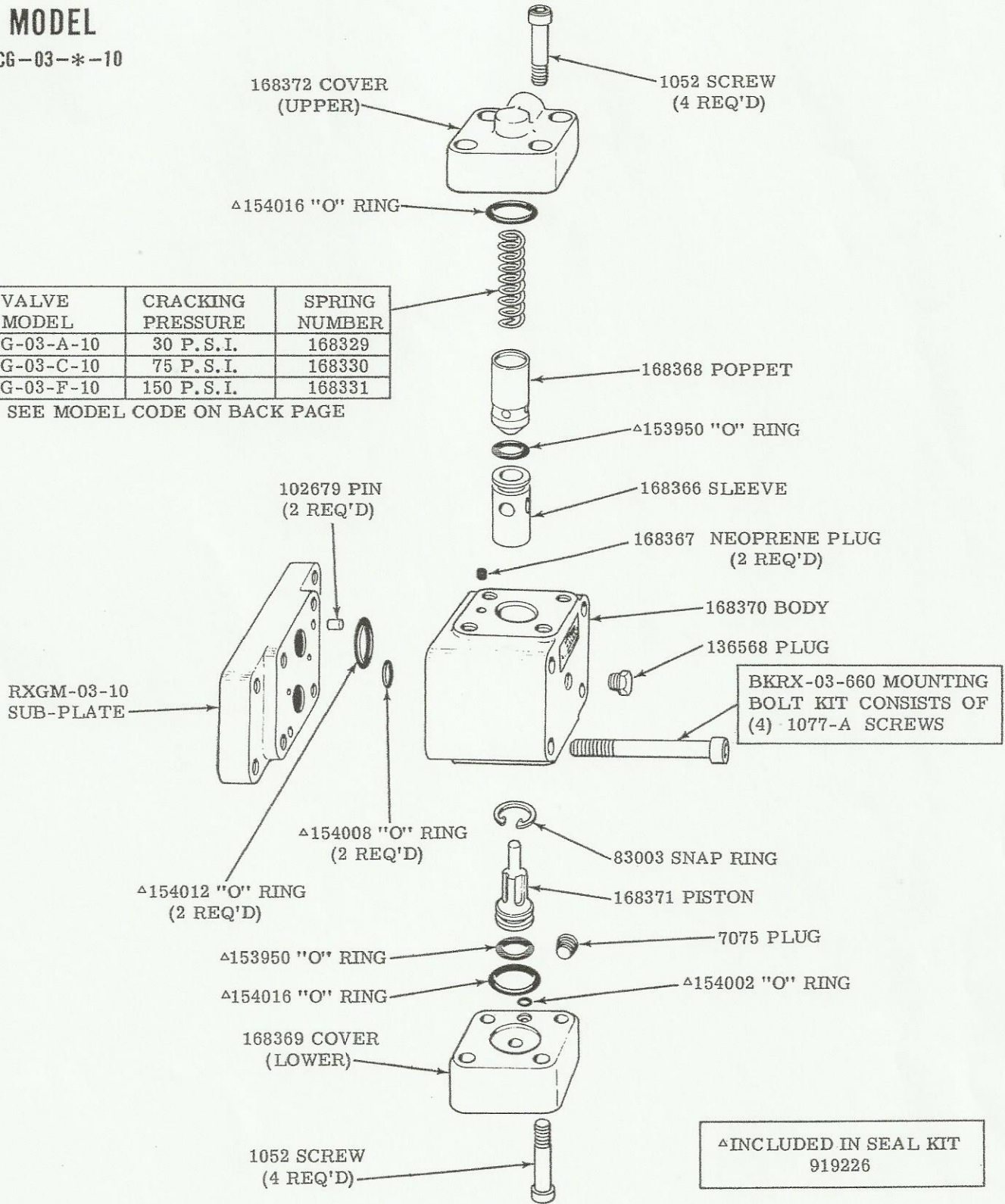
I-3575-S

# MODEL

4CG-03-\*--10

VALVE MODEL	CRACKING PRESSURE	SPRING NUMBER
4CG-03-A-10	30 P.S.I.	168329
4CG-03-C-10	75 P.S.I.	168330
4CG-03-F-10	150 P.S.I.	168331

SEE MODEL CODE ON BACK PAGE



To insure sustained efficiency and maximum trouble-free life of this precision equipment, initial and continuous filtration of the fluid medium to 25 microns or less is essential. (For information pertaining to Vickers economical 10 micron filters, see installation drawing I & M 229847.)

**MODEL**  
4CG-06-\* -10

1073 SCREW  
(4 REQ'D)

133305 COVER  
(UPPER)

△154020 "O" RING

VALVE MODEL	CRACKING PRESSURE	SPRING NUMBER
4CG-06-A-10	30 P. S. I.	2287
4CG-06-C-10	75 P. S. I.	94535
4CG-06-F-10	150 P. S. I.	96333

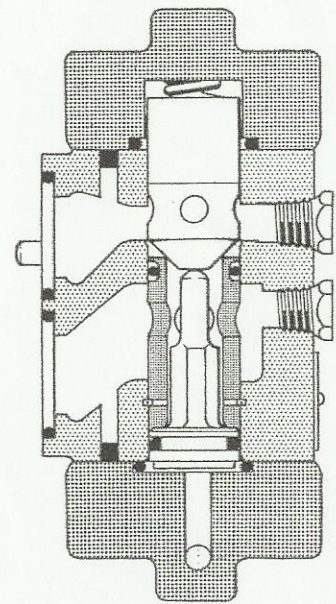
SEE MODEL CODE ON BACK PAGE

87763 SLEEVE

102679 PIN  
(2 REQ'D)

2714 POPPET

△154014  
"O" RING



Cross section of 4CG-06-\* -10 shows typical construction of each of the check valve sizes.

128249 NEOPRENE PLUG (2 REQ'D)

133319 BODY

136568 PLUG (2 REQ'D)

RXGM -06-10  
SUB-PLATE

BKRX-06-661 MOUNTING  
BOLT KIT CONSISTS OF  
(4) 1078-B SCREWS

△154011 "O" RING  
(2 REQ'D)

87764 SNAP RING

△154020 "O" RING  
(2 REQ'D)

133304 PISTON

△154014 "O" RING

7075 PLUG

△154019 "O" RING

△154004 "O" RING

133326 COVER  
(LOWER)

1073 SCREW  
(4 REQ'D)

△INCLUDED IN SEAL KIT  
919227

# MODELS

4CG-10-\* -10  
4CG-10-\* -11

1074 SCREW  
(4 REQ'D)

133309 COVER  
(UPPER)

△154024 "O" RING

VALVE MODEL	CRACKING PRESSURE	SPRING NUMBER
4CG-10-A-1*	30 P.S.I.	87921
4CG-10-C-1*	75 P.S.I.	60290
4CG-10-F-1*	150 P.S.I.	132085

△154011 "O" RING  
(2 REQ'D)

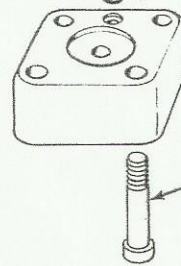
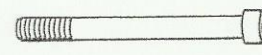
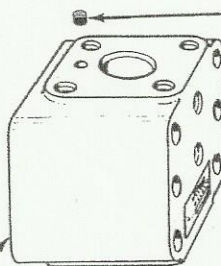
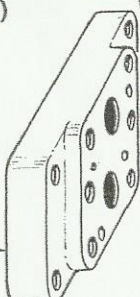
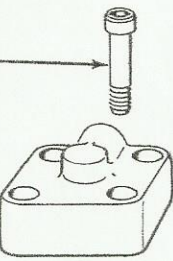
△154024 "O" RING  
(2 REQ'D)

102679 PIN  
(2 REQ'D)

6422 POPPET

RXGM-10-10  
SUB-PLATE

MODEL	BODY	SLEEVE	SNAP RING
4CG-10-* -10	133323	87884	87885
4CG-10-* -11	253348	253327	253315



# MODEL CODE BREAKDOWN

4CG-10-A-11

PILOT OPERATED

CHECK VALVE

GASKET MOUNTING

### PORT SIZE

03-3/8" I. P. THD.

06-3/4" I. P. THD.

10-1 1/4" I. P. THD.

10-FIRST DESIGN  
11-FIRST DESIGN WITH FIRST MODIFICATION

### CRACKING PRESSURE

A-30 P.S.I.

C-75 P.S.I.

F-150 P.S.I.

Cracking pressure is the initial pressure required to overcome spring compression normally holding the poppet closed. Pressure holding the poppet open then permits fluid to flow from the primary to secondary port without application of pilot pressure.

128249 NEOPRENE PLUG  
(2 REQ'D)

136568 PLUG  
(2 REQ'D)

BKRX-10-662 MOUNTING BOLT KIT CONSISTS OF (6) 1079-C SCREWS

△154018 "O" RING

133307 PISTON

△154018 "O" RING

7075 PLUG

△154024 "O" RING

△154005 "O" RING

133658 COVER (LOWER)

1074 SCREW (4 REQ'D)

△INCLUDED IN SEAL KIT 919228