

Service Data

**Vickers®**

# Vane Pumps

---



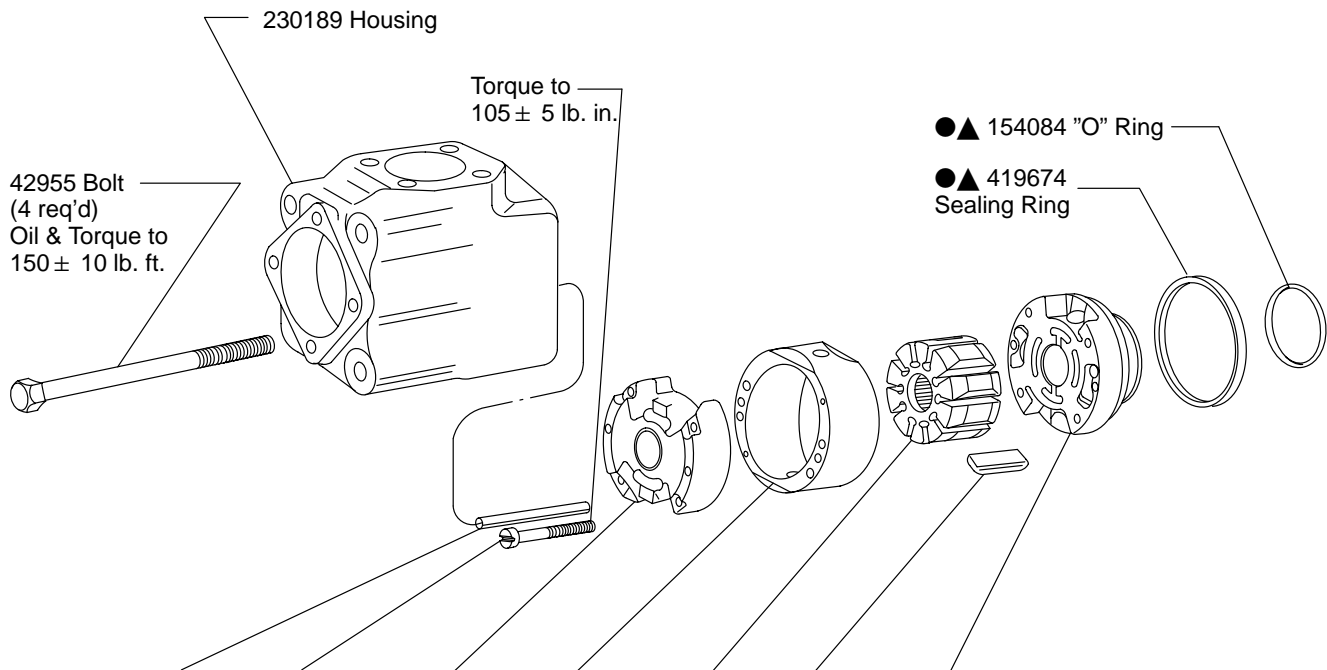
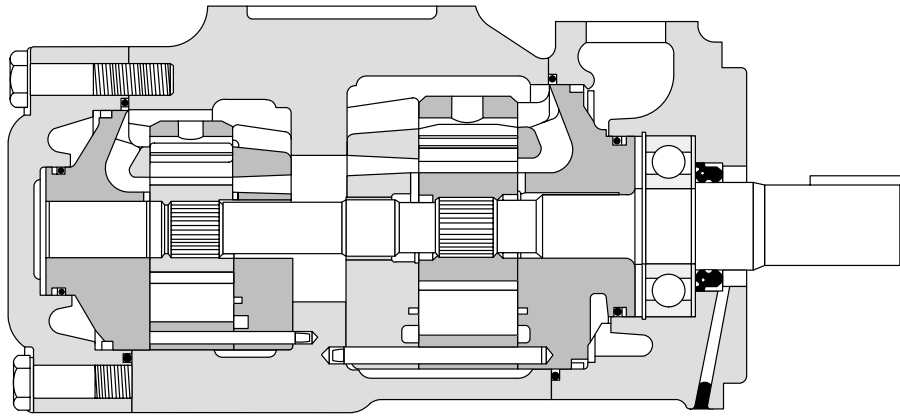
## Vane Type Double Pump

F6-3525V\*\*\*\*\*-\*\*\*12(L)



Revised 05/01/97

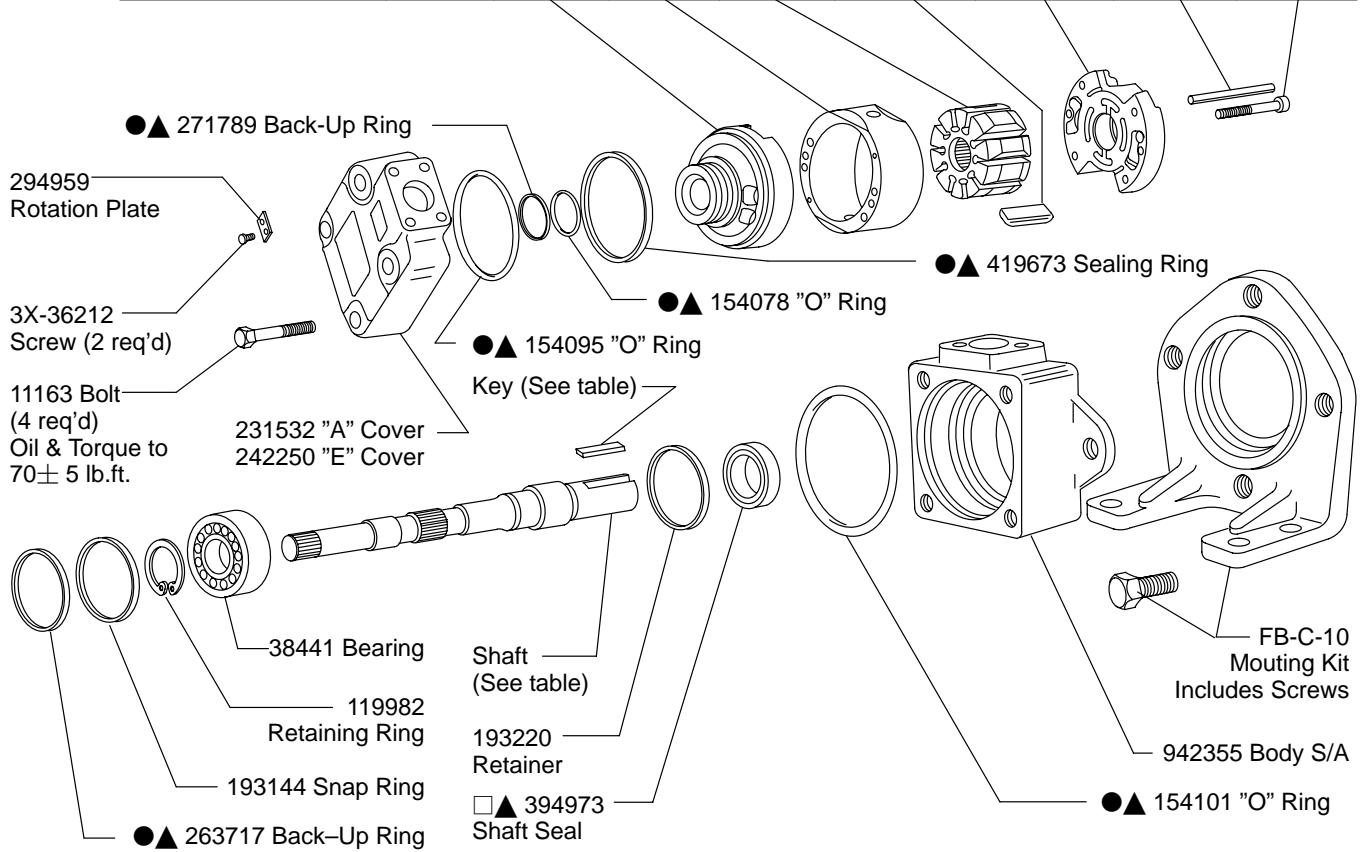
I-3190-S



Pin (2 req'd)	Screw (2 req'd)	Wear Plate S/A	Ring	Rotor	Vane Kit (10 Vanes)	Pressure Plate	Cart Kit	Model
These parts are included in cartridge kit								
280031	289475	427596	319396	427589	941018	573855	427598	F6-3525V25***_**12
		573856				572839	573857	F6-3525V25***_**12L
		427596	319397			573855	586764	F6-3525V30***_**12
		573856				572839	586765	F6-3525V30***_**12L
		427596	319398			573855	586762	F6-3525V35***_**12
		573856				572839	586763	F6-3525V35***_**12L
		427596	319399			573855	586760	F6-3525V38***_**12
		573856				572839	576761	F6-3525V38***_**12L

F6 Cartridge Kit rotation cannot be reversed by exchanging the pressure plate and wear plate as in previous designs. Order kits with the correct shaft rotation from cover end and shaft end cartridge kit tables.

Model	Cart Kit	Pressure Plate	Ring	Rotor	Vane Kit (10 Vanes)	Wear Plate S/A	Pin (2 req'd)	Screw (2 req'd)
	These parts are included in cartridge kit							
F6-3525V****12-**12	596038	434204	326984	434208	941148	434206	229662	289472
F6-3525V****12-**12L	626103	434210						
F6-3525V****14-**12	626104	434204	326985					
F6-3525V****14-**12L	626105	434210						
F6-3525V****17-**12	626106	434204	326986					
F6-3525V****17-**12L	626107	434210						
F6-3525V****21-**12	595189	434204	326988					
F6-3525V****21-**12L	595190	434210						



Type	Shaft	Key
1	243448	88678
11	243449	—

### Cartridge Assembly Note

Rotor vane slot grooves lead in direction of rotation. Vanes must be oriented to fit rotor grooves.

### □ Note

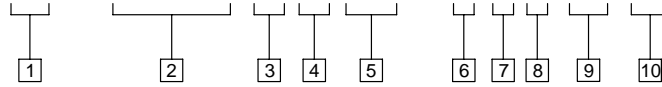
Apply a small amount of grease to the inner circumference of seal before installation of shaft. Assemble seal with spring toward bearing.

▲ Included in 922862 seal kit

● Also included in cartridge kit

# Model Code

**F6 - 3525V \*\* \* \*(\*) - \* \* \* 12 (L)**



**1 Seal Material**

F6 - Soluble oil & water fluids

**2 Model Series**

3525V - Vane Pump

**3 Capacity**

(Shaft end pump)  
(Rating at 1200 RPM - 100 PSI)

**4 Port Connections**

A - SAE 4 bolt flange  
E - SAE Standard thread at #2 outlet port

**5 Capacity**

(Cover end pump)  
(Rating at 1200 RPM - 100 PSI)

**6 Shaft Type**

1 - Straight keyed  
11 - Splined

**7 #2 Outlet Port Position**

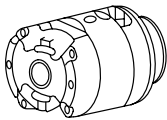
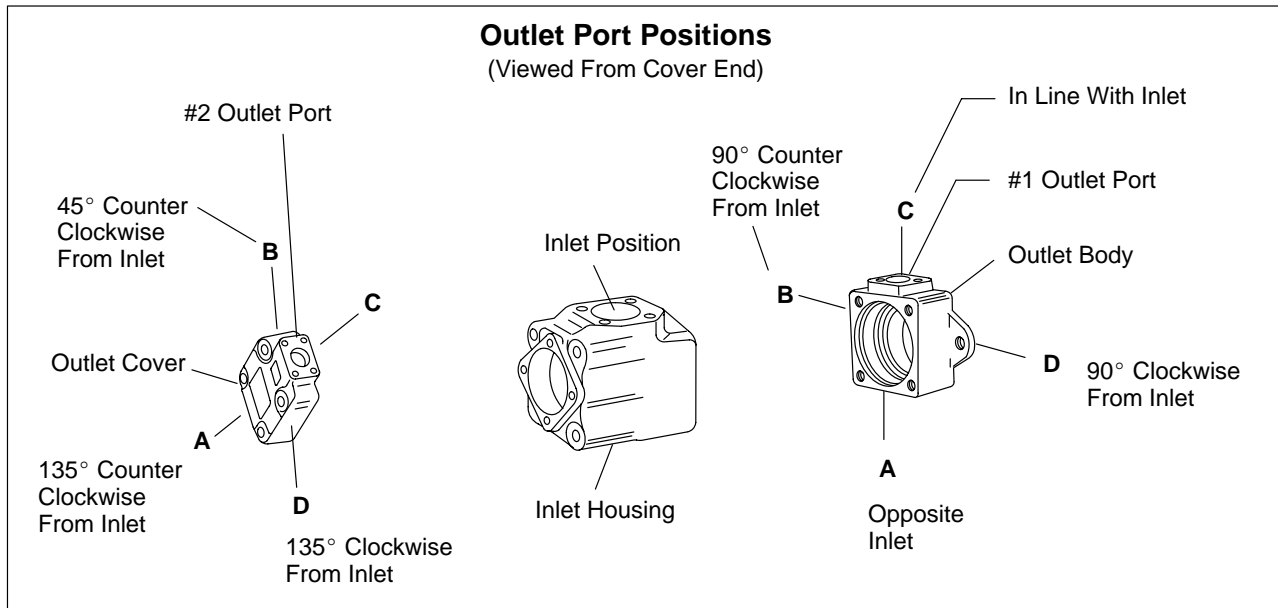
**8 #1 Outlet Port Position**

**9 Design**

**10 Rotation**

(Viewed from shaft end)

L - Left hand  
Omitted - Right hand



When ordering spare cartridge parts, it is recommended they be obtained in cartridge kits. Kits are assembled and tested by Vickers. When ordering an "F6" Cartridge Kit, first determine shaft rotation and flow, then order from the Cartridge Kit tabulation on the other page.

For satisfactory service life of these components in industrial applications, use full flow filtration to provide fluid which meets ISO cleanliness code 20/18/15 or cleaner. Selections from Eaton OFP, OFR, and OFRS series are recommended.

**Eaton Hydraulics**

15151 Highway 5  
Eden Prairie, MN 55344  
Telephone: 612 937-7254  
Fax: 612 937-7130  
[www.eatonhydraulics.com](http://www.eatonhydraulics.com)

46 New Lane, Havant  
Hampshire PO9 2NB  
England  
Telephone: (44) 170-548-6451  
Fax: (44) 170-548-7110

